

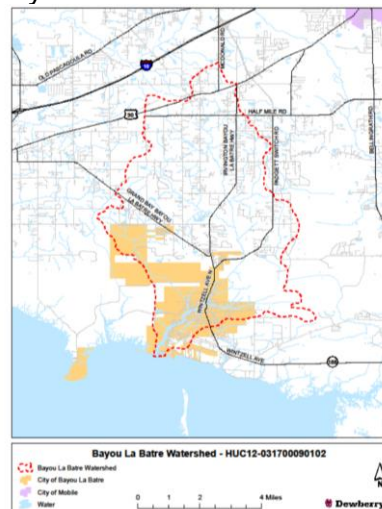


# Bayou La Batre Watershed Management Planning

July 14, 2015

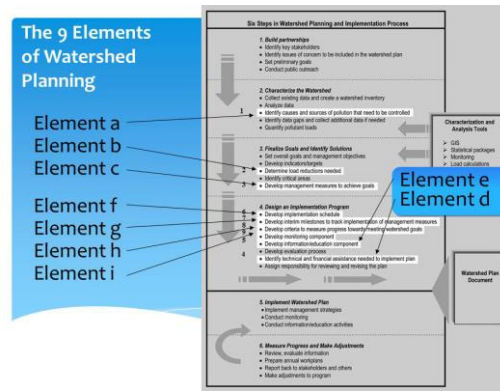
## Project Team

- Environmental Health & Resiliency:
  - Dewberry (Chris Warn)
- Culture & Heritage:
  - PMCG (Mike Magnoli, PhD)
- Habitats:
  - DISL (Just Cebrian, PhD)
  - Eric Sparks, PhD
- Water Quality:
  - ESA (Doug Robison)
- Shorelines:
  - SCE (Bret Webb, PhD, PE)
- Access:
  - Biohabitats (Ed Morgereth)



## WMP Overview

- Stakeholder Outreach & Engagement
- Watershed Characterization
- Prescription of Management Measures
- Watershed Management Plan Development
- Regulatory Evaluation & Adaptation
- Implementation Activities
- Prioritize & Schedule Implementations Activities
- Long Term Financing
- Monitoring & Evaluation of Success



3 | Bayou La Batre WMP Kickoff Meeting May 5-6, 2015



## Stakeholder Outreach & Engagement

- Identified stakeholders
- Obtained commitments of Steering Committee members
- Databases generated for Community Outreach participants and Steering Committee members
- Developed both English and non-English versions of BLB WMP PowerPoint presentation
- Developed meeting agendas, survey instruments, and other support materials
- Identified issues based on initial public input
- Developing preliminary goals



4 | Bayou La Batre WMP Kickoff Meeting May 5-6, 2015



## Stakeholder Outreach & Engagement

- Steering Committee
- Small Group Meetings
  - Response Center
  - Churches
  - Cambodian community
  - Vietnamese community
  - Laotian community
- Other Meetings
  - Presentation to BLB City Council



5 | Bayou La Batre WMP Kickoff Meeting May 5-6, 2015



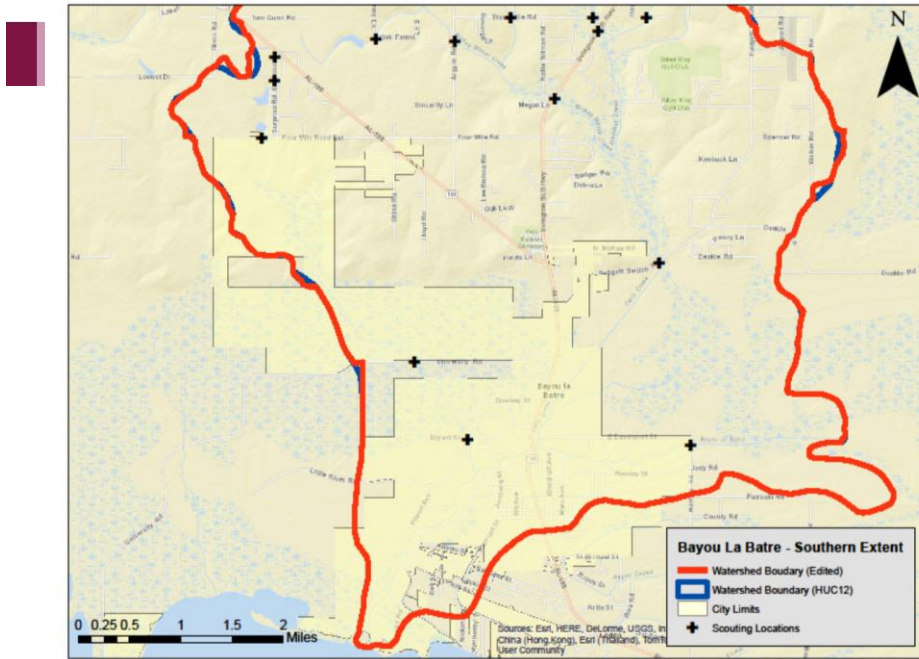
## Watershed Characterization

- Kickoff meeting/watershed tour (May 5-6)
  - Tour of upper/lower watershed areas
- Developed base maps
- Gathering existing data
- Identifying data gaps
- Science team watershed tour to identify monitoring locations (July 6)
- Developing monitoring plan
  - Alma Bryant High School participation in monitoring program
    - 8 students (WQ/Wetlands)



6 | Bayou La Batre WMP Kickoff Meeting May 5-6, 2015





7 | Bayou La Batre WMP Kickoff Meeting May 5-6, 2015



## Environmental Health & Resiliency

- Challenges
  - Town center in floodplain
  - Vulnerability to storm surge and localized flooding
- Community Concerns
  - Debris in waterways
  - Flooding
  - Hurricanes
- Actions
  - SLR & Vulnerability Assessment
  - SLAMM Modeling
  - SLOSH Modeling
- Preliminary Goals
  - Improve community resiliency



8 | Bayou La Batre WMP Kickoff Meeting May 5-6, 2015



## Culture & Heritage

- **Challenges**
  - Diverse community
  - Differing users (agriculture, fishing, aquaculture)
  - Limited economic diversity (shipbuilding, seafood industry, agriculture)
- **Community Concerns**
  - Health of bayou and Portersville Bay
  - Sustainability of seafood industry
  - Community awareness of issues
  - Impacts from future development
- **Actions**
  - WMP development
  - Integrate with regional planning effort
  - Increase community engagement
- **Preliminary Goals**
  - Improve community vitality and connection to bayou



9 | Bayou La Batre WMP Kickoff Meeting May 5-6, 2015



## Habitats

- **Challenges**
  - Invasive species
  - Little transition zone to bayou
  - Very different systems—upper vs. lower watershed
- **Community Concerns**
  - Wetland protection
  - Sustainable fisheries and nurseries
  - Refuge for wildlife
- **Actions**
  - Characterize watershed connectivity
  - Characterize wetland function
  - Engage community
- **Preliminary Goals**
  - Protect and enhance habitat areas



10 | Bayou La Batre WMP Kickoff Meeting May 5-6, 2015





## Water Quality

- **Challenges**
  - Pathogens TMDL
  - Limited data
  - Existing reports are dated
- **Community Concerns**
  - Fishable/swimmable water bodies
  - Trash in waterways
  - Pollution impacts on aquaculture and fisheries
- **Actions**
  - Develop monitoring program
  - Gain better understanding of watershed hydrology and water quality
  - Investigate pathogens
- **Preliminary Goals**
  - Improve water quality



11 | Bayou La Batre WMP Kickoff Meeting May 5-6, 2015



## Shorelines

- **Challenges**
  - Dredged channel
  - Steep banks with little transition
  - Much of bayou privately owned
  - Dilapidated city docks
- **Community Concerns**
  - Navigable channel for industry
  - Debris in upper bayou and flooding
  - Safe harbor
- **Actions**
  - Assess shorelines
- **Preliminary Goal**
  - Improve shoreline health and resiliency

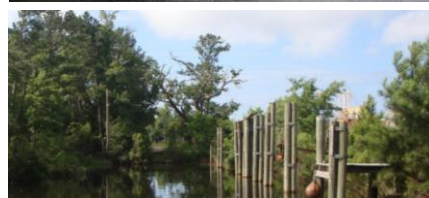


12 | Bayou La Batre WMP Kickoff Meeting May 5-6, 2015



## Access

- **Challenges**
  - Availability of GIS data
  - Much of bayou privately owned
  - City docks underutilized and in disrepair
  - Differing users—commercial fisherman vs. kayaks
  - Differing pressure for highest and best use of public land
- **Community Concerns**
  - Public access to bayou
  - Safety of recreating in bayou
  - More recreational opportunities
- **WMP Actions**
  - Identify parcel ownership
  - Identify areas for public access
  - Catalog green space
- **Preliminary Goal**
  - Provide more public access and recreation opportunity for residents and tourists



13 | Bayou La Batre WMP Kickoff Meeting May 5-6, 2015



## Upcoming Activities

- Continue watershed characterization
- Watershed canoe tour (July 23)
- Vulnerability Assessments
  - SLAMM Modeling
  - SLOSH Modeling
- Implement monitoring plan late-July/Aug
- Finalize WMP outline with MBNEP input



14 | Bayou La Batre WMP Kickoff Meeting May 5-6, 2015





*This project is supported wholly or in part by Mobile Bay National Estuary Program as part of a grant from National Fish and Wildlife Foundation Gulf Environmental Benefit Fund*

