

# Dog River & Fowl River Updates

July 14, 2015  
MBNEP PIC  
International Trade Center



## Dog River

- Initial Steering Committee meeting held on June 4<sup>th</sup>
  - Identifying key stakeholders
- Working on identity/branding

**CLEAN water**  
**CLEAR future**  
DOG RIVER & GARROW'S BEND WATERSHEDS



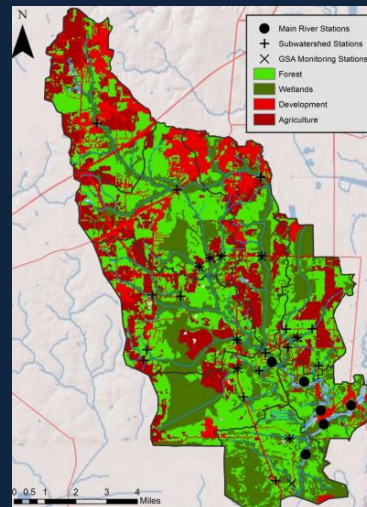
## Dog River

- Project team is working through the literature review
  - Compiling existing data
  - Identifying data gaps
- Next Steering Committee meeting
  - July 23<sup>rd</sup>
  - Marlon Cook will present completed GSA study for the watershed



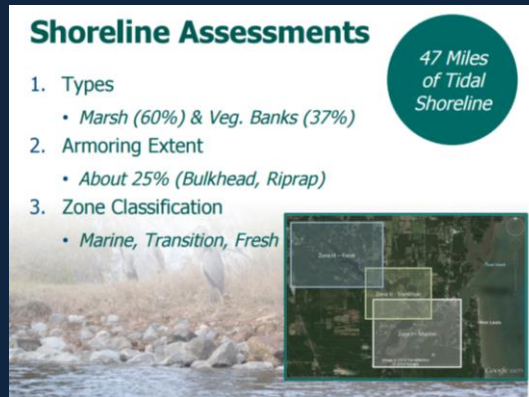
## Fowl River

- Data Collection is complete, and shifting into analysis.
  - Extended data collection to include more summer sampling
  - WQ analysis includes plots/regressions for many parameters (***ID hotspots for restoration***)
  - Critical issues/management measures



## Fowl River

- Coastal/Shoreline Analysis is almost complete
- Draft report of GSA study has been completed and results incorporated into the WMP



**Shoreline Assessments**

47 Miles of Tidal Shoreline

1. Types
  - Marsh (60%) & Veg. Banks (37%)
2. Armoring Extent
  - About 25% (Bulkhead, Riprap)
3. Zone Classification
  - Marine, Transition, Fresh

The infographic includes a photograph of a rocky shoreline with waves crashing against the rocks, and a map of the Fowl River watershed with three rectangular boxes highlighting different shoreline zones: Marine, Transition, and Fresh.

## Fowl River

- Next Steering Committee Meeting
  - July 21<sup>st</sup>
  - Coastal recommendations
  - WQ analysis/trends
- One remaining large-scale public meeting
  - August
  - Plan recommendations

