

# Mobile Bay National Estuary Program

Government Networks Committee  
June 5, 2015  
Original Oyster House, Spanish Fort, AL



## Welcome & Approval of Minutes

Merceria Ludgood, Mobile County Commission  
Charles "Skip" Gruber, Baldwin County Commission





# RESTORE Act update

Patti Powell, ADCNR

# EPA Program Evaluation

Jamal Kadri, EPA





# Watershed Planning in Coastal Alabama

Roberta Swann

## Promoting the Watershed Approach *Plan, Implement, Monitor, Respond and Adapt*

### EPA's Key Elements

- **Partnerships**, key stakeholders and solicitation of community input and concerns
- **Characterization**, causes and sources of impairments, data gaps and pollutant loads
- **Management Measures** for pollutant reductions needed and measures to achieve goals
- **Implementation Program** schedule, milestones, monitoring, education program, regulatory, financial assistance

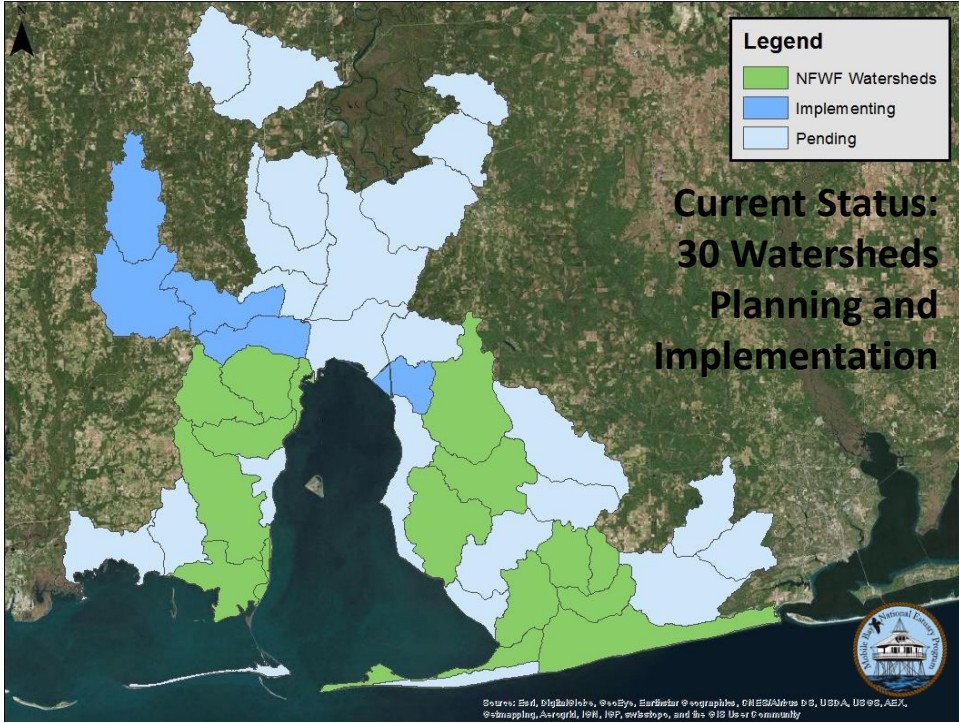
### Coastal Alabama Values

- Access
- Shorelines
- Fish & Wildlife
- Heritage/Culture
- Resiliency
- Water Quality

### Climate Change and Sea Level Rise

- SLAM and SLOSH modeling
- SWMM modeling where appropriate





# Limits of Home Rule in Alabama

Craig Baab, Alabama Appleseed



## 2015 GNC Meeting Schedule

- September 4<sup>th</sup>
- December 4<sup>th</sup>

