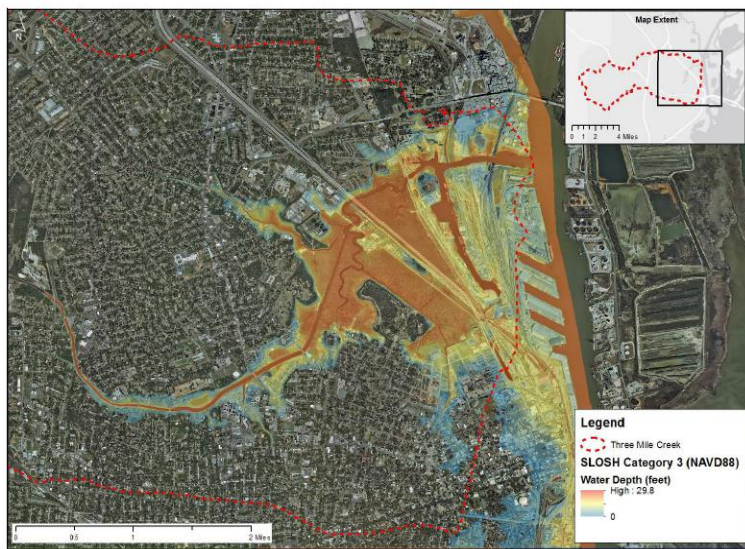


Toulmins Spring Branch Community Resiliency Engagement Project



From TMC WMP: SLOSH Model

Figure 4-12 Depth grid showing depth of water from a Category 3 storm surge at high tide in 2013 with no SLR



Purpose & Goals

Purpose: Involve residents within TSB in planning for how their community will adapt to changing climate impacts.

Goals:

- Increase residents' understanding of climate change risks
- Increase community participation in how they adapt to impacts, thereby promoting community resiliency.

Objectives

- **Engage-** Partner with the Cities of Mobile and Prichard to coordinate a minimum of three community meetings to educate the Toulmins Spring Branch area residents about their environment, causes of flooding and water pollution, and how these hazards are projected to increase due to effects of climate change.
- **Support-** As a follow-up to the community meetings, hold an "Ideas Festival".
 - Utilizing an asset/strengths approach,
 - During the "Ideas Festival" residents will:
 - Identify physical assets in the community in need of protection from flooding.
 - Offer ideas on what is needed to improve the targeted community's protection against flooding.
 - Identify existing resources and skill sets within the community that improve the community's resiliency
 - Explore how they can work together with the city or other entities to make improvements and become more resilient.
 - Identify community members who are willing to help in this effort.

TSB Schedule

- Contract with Kim Pettway (USA Social Work)
- Field Work: June 19th July 30th
- Community Meetings currently planned for 7/23, 7/28, and 7/30
- Final Report from Kim – August 31, 2015
- Sea Grant Resiliency Workshop with City of Mobile - TBD