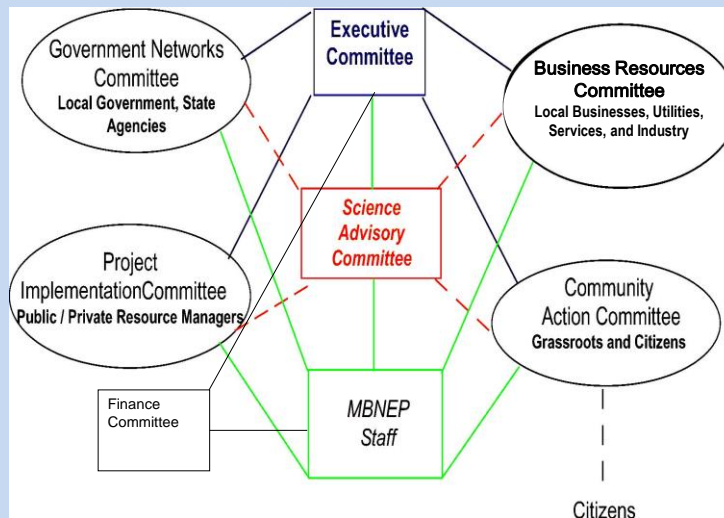


## Mobile Bay National Estuary Program Annual Breakfast



December 17, 2014  
Battle House, Mobile AL

### The MBNEP Management Conference





## ***THANK YOU***

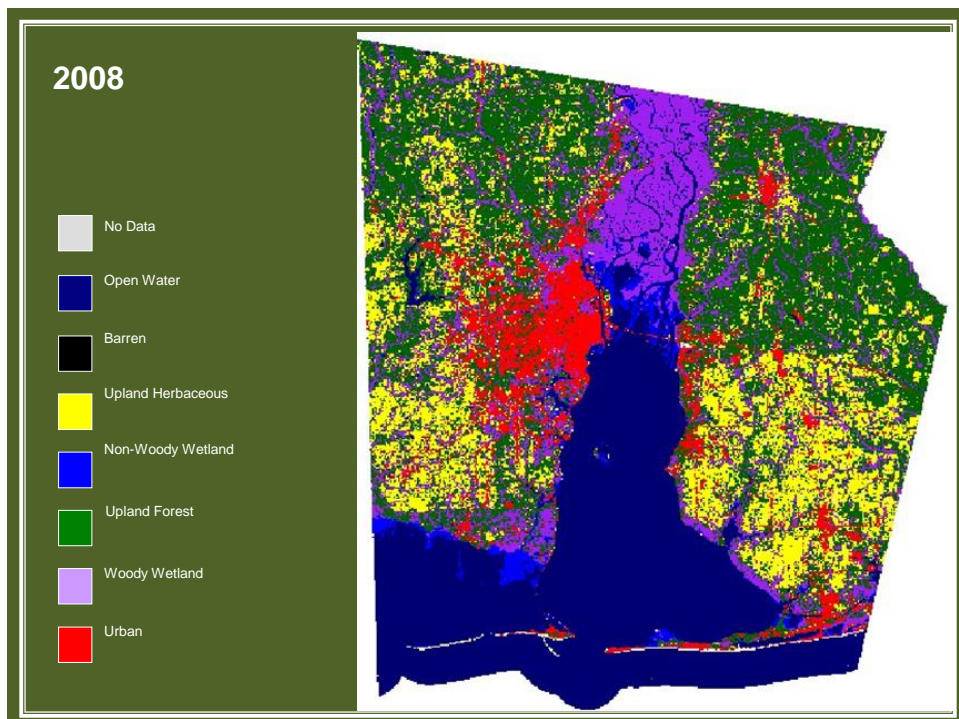
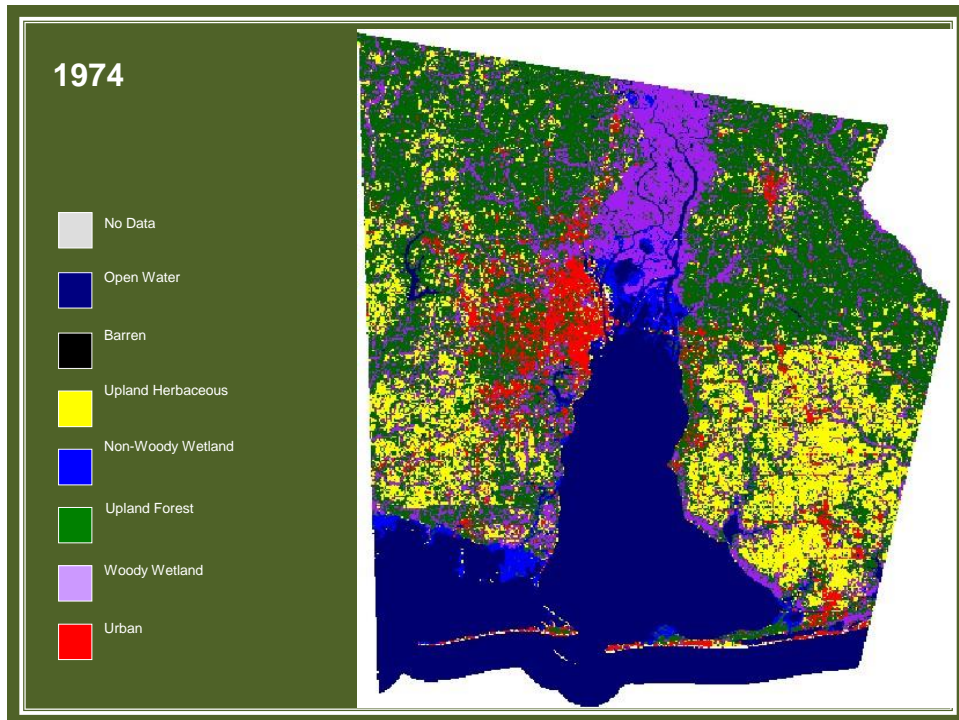
Linda Ingram

Kelley Barfoot  
Tiffany England  
Rick Frederick  
Tom Herder  
Christian Miller

## **The Big Picture**

- Covers 2/3 of Alabama, & portions of Mississippi, Georgia, and Tennessee
- 6th largest in North America by area (43,000 square miles)
- 4th largest in North America by flow volume (62,000 cubic feet of water per second)
- Flushes 15-20% of nation's fresh water through Mobile Bay













## Habitats, Ecosystem Services, Stresses, Values

Habitat	Ecosystem Services Most Stressed	Top Stress Impacts	Values
<b><i>Freshwater Wetlands</i></b>	Nesting for birds and turtles Biodiversity Wildlife, Fisheries	Land Use Change Fragmentation Dredging and Filling	Access Fish Heritage Resilience Water Quality
<b><i>Intertidal Marshes and Flats</i></b>	Biodiversity Fisheries Wildlife Water Quality	Sediment Sea Level Rise Fragmentation	Access Beaches Fish Heritage Resilience Water Quality
<b><i>Streams and Rivers (Riparian Buffers)</i></b>	Fish Biodiversity Water Quality Sediment	Freshwater discharge Land Use Change Sediments	Access Fish Heritage Resilience Water Quality





**Traditional Approach**  
Addressing the consequences of  
land development



**Watershed Approach**  
Eliminating or reducing  
the source of the problem

**CCMP  
Methodology**



**CCMP Five Year Strategy  
2013-2018**

- **Develop baselines** and measure changes
- **Create and implement comprehensive watershed plans** for HUC 12 watersheds, with preference given to those that border marine waters (sound, bay, gulf, lagoon)
- **Improve and restore degraded systems** identified in plans
- **Build the institutional and economic infrastructure** necessary for long-term resource management and sustainability
- **Engage community** in long-term stewardship

**Monitoring  
Estuarine Health  
Science Advisory  
Committee**



**CCMP Five Year Strategy**

**Goals**

- **Establish indicators** of ecosystem health
- **Establish quantitative baselines** for measuring progress in most and least stressed watersheds
- **Develop monitoring program** of indicators that synthesizes existing water quality data and identifies data gaps
- **Periodically Report** on Estuary Health



*Human Connections  
System Restoration*

**Project  
Implementation  
Committee**

## CCMP Five Year Strategy



### Goals

- **Improve trends in water quality** in priority watersheds with impairments that discharge into fishery nursery areas
- **Improve ecosystem function and resilience** through protection, restoration, and conservation of first-line-of-defense habitats including beaches, bays, backwaters, and rivers
- **Restore and expand human connections**

*Building Capacity*

**Government Networks  
Committee**

## CCMP Five Year Strategy



### Goals

- **Improve understanding of issues** that impact environmental health and land / water management
- **Promote a fair and reasonable regulatory process** for private/public access.
- **Institutionalize policies** necessary to better manage our coastal waters and lands
- **Improve local long-term maintenance capabilities** for restored resources

*Building Capacity*

**Business  
Resources  
Committee**



## CCMP Five Year Strategy

### Goals

- **Improve Business community understanding** of how the coastal environment contributes to economic, cultural, and community well being
- **Connect the business community** to Mobile and Baldwin Counties' coastal natural resources/estuary
- **Incentivize the management of stormwater** throughout coastal Alabama
- **Conserve and improve working waterfronts** and preserve fishing communities
- **Increase business support** for protecting archaeological, cultural and historical sites that have unique connections to the estuary/coast .

*Building Capacity*

**Community Action  
Committee**

## CCMP Five Year Strategy

### Goals

- 1) **Increase awareness of coastal resources that support what people value most** about living in Coastal Alabama.
- 2) **Improve community ability to participate** in ecosystem based management actions.
- 3) **Encourage citizens to support and be more engaged in restoration** and conservation of critical habitats
- 4) **Build capacity** of grassroots groups
- 5) **Build support for changes to Federal, State and Local Regulations** to improve management of coastal resources and promote enforcement of existing regulations



# Together, we will



Thank you.