



engineers | scientists | innovators

# Perdido Watershed Management Planning

*Baldwin County, Alabama*

*February 21, 2022*

# Introductions



<https://bit.ly/Perdido1>

As a group, collect  
200-300 responses  
by April 30<sup>th</sup>

Blurb to introduce survey:

*As a stakeholder, I am partnering with Mobile Bay National Estuary Program to develop Watershed Management Plans, which will provide a roadmap for restoring or conserving watersheds and improving water and habitat quality. These WMPs will chart a conceptual course for improving or protecting the things people value most about living along the Alabama coast. This quick ten-question survey will help us hear from you, the people who work, live, and play in the watershed. Go to [Western Perdido Bay - Mobile Bay National Estuary Program \(mobilebaynep.com\)](http://mobilebaynep.com) for more information.*

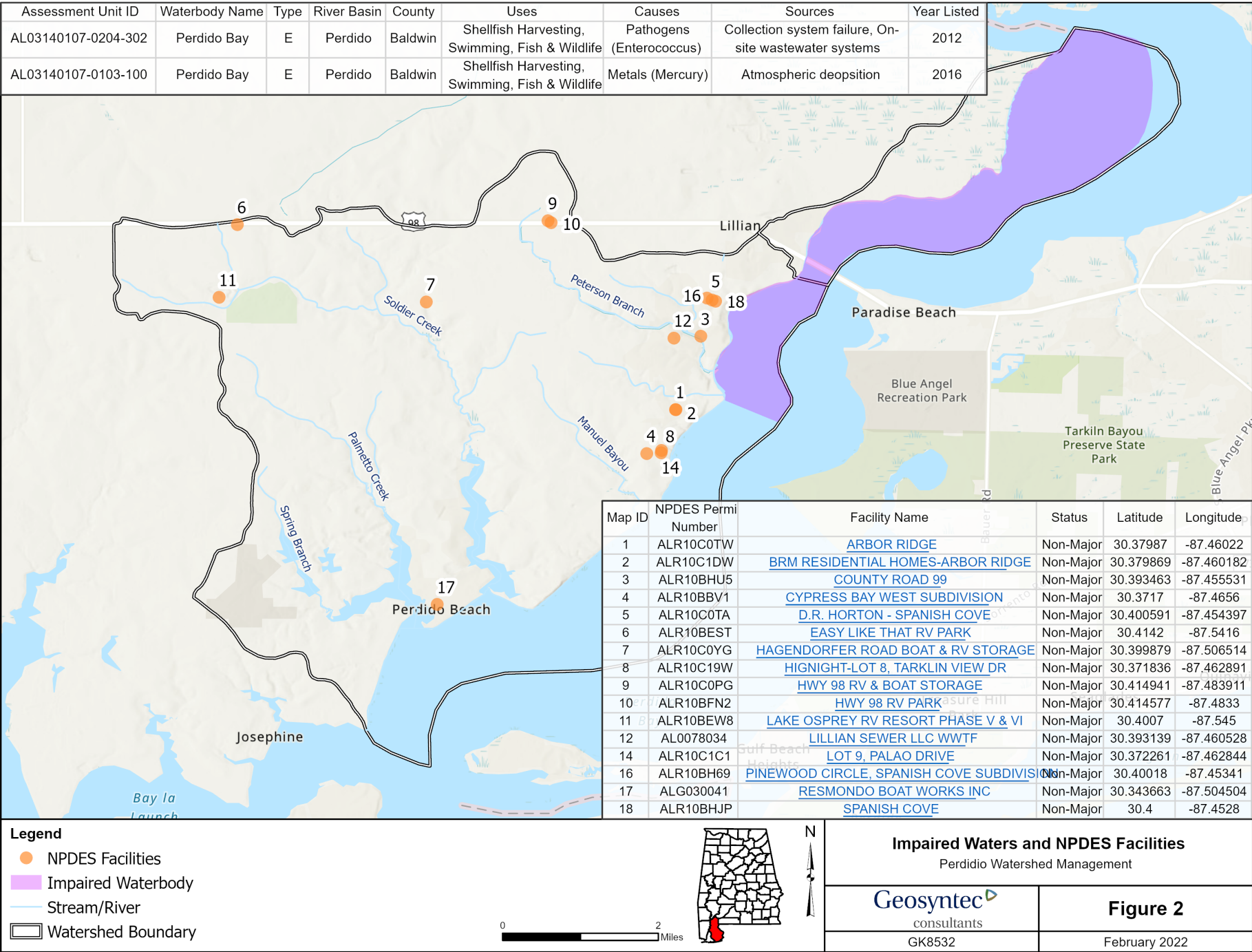


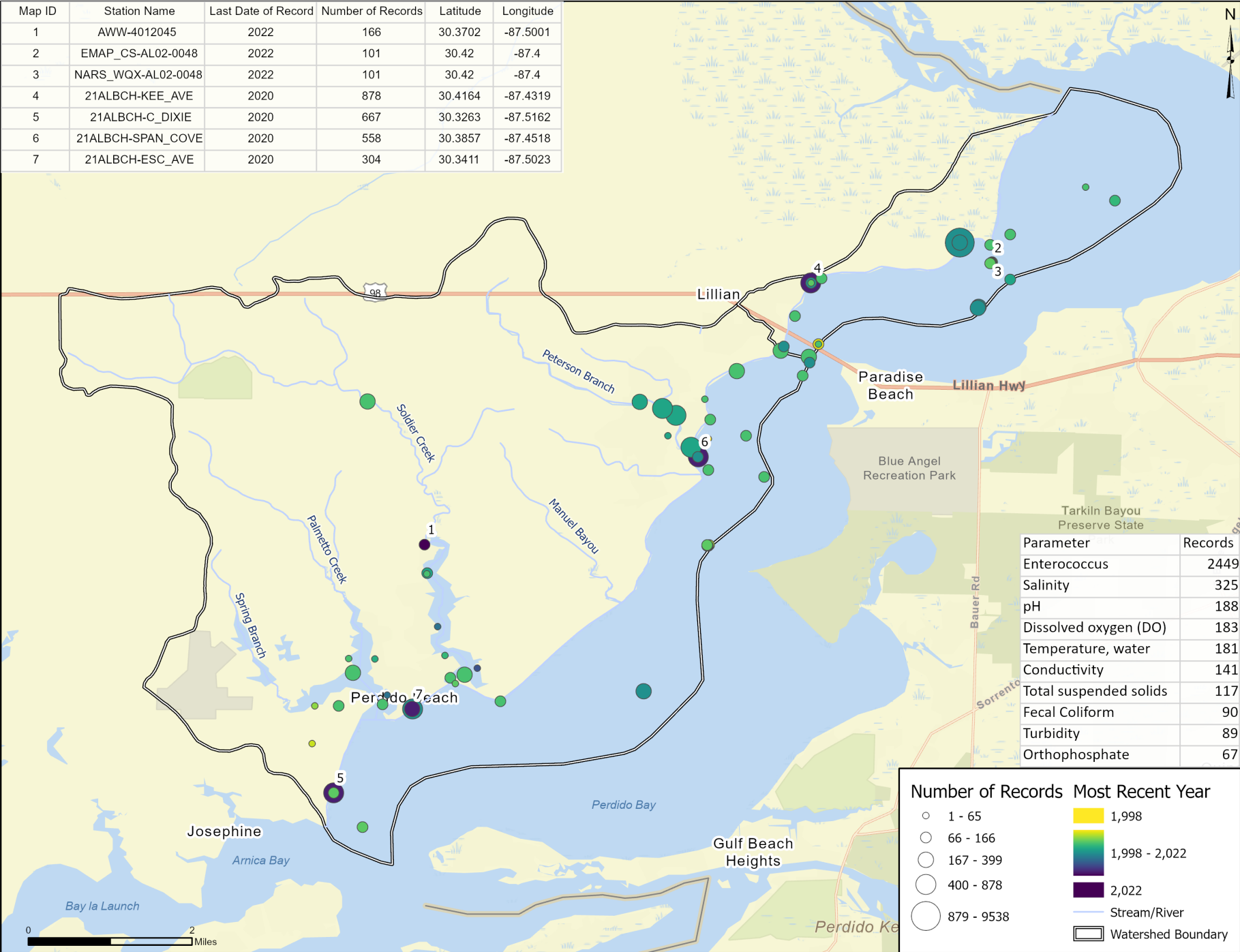
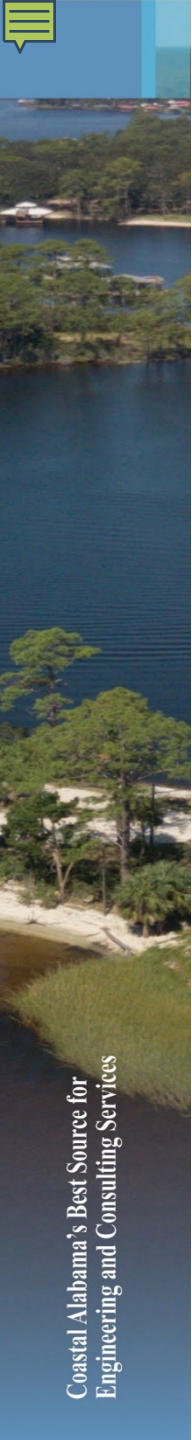
<https://bit.ly/Perdido2>

1. "We pass to our grandkids a small community culture characterized by wildlife corridors and significantly intact watersheds where the streams and rivers are fishable and swimmable."
2. "We preserve our community and culture to give our grandchildren a future with resilient watersheds, abundant wildlife, and streams and rivers open for recreation."
3. "Our community and culture is resilient, and through responsible development provides future generations with a quality of life measured by clean water, abundant wildlife, and healthy watersheds."

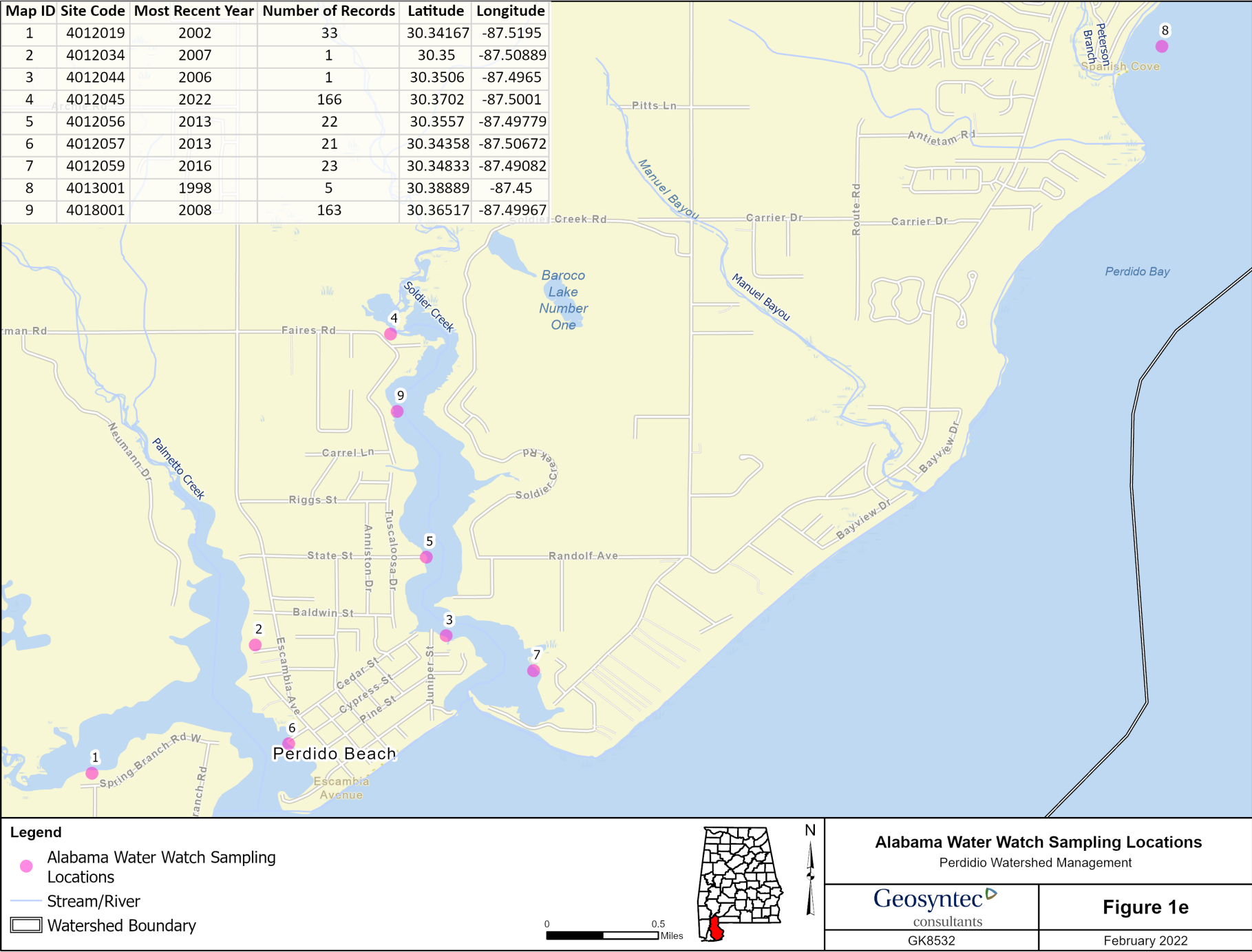
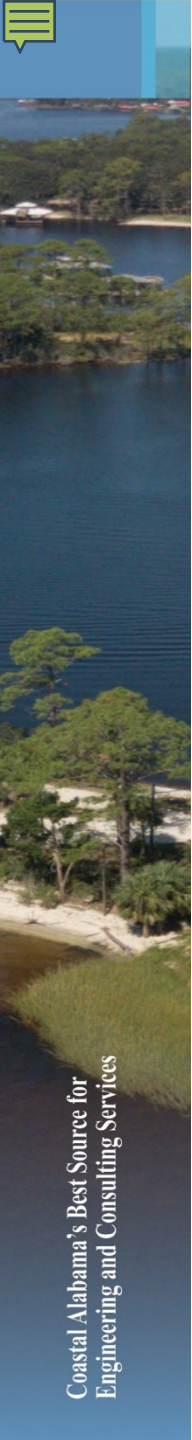


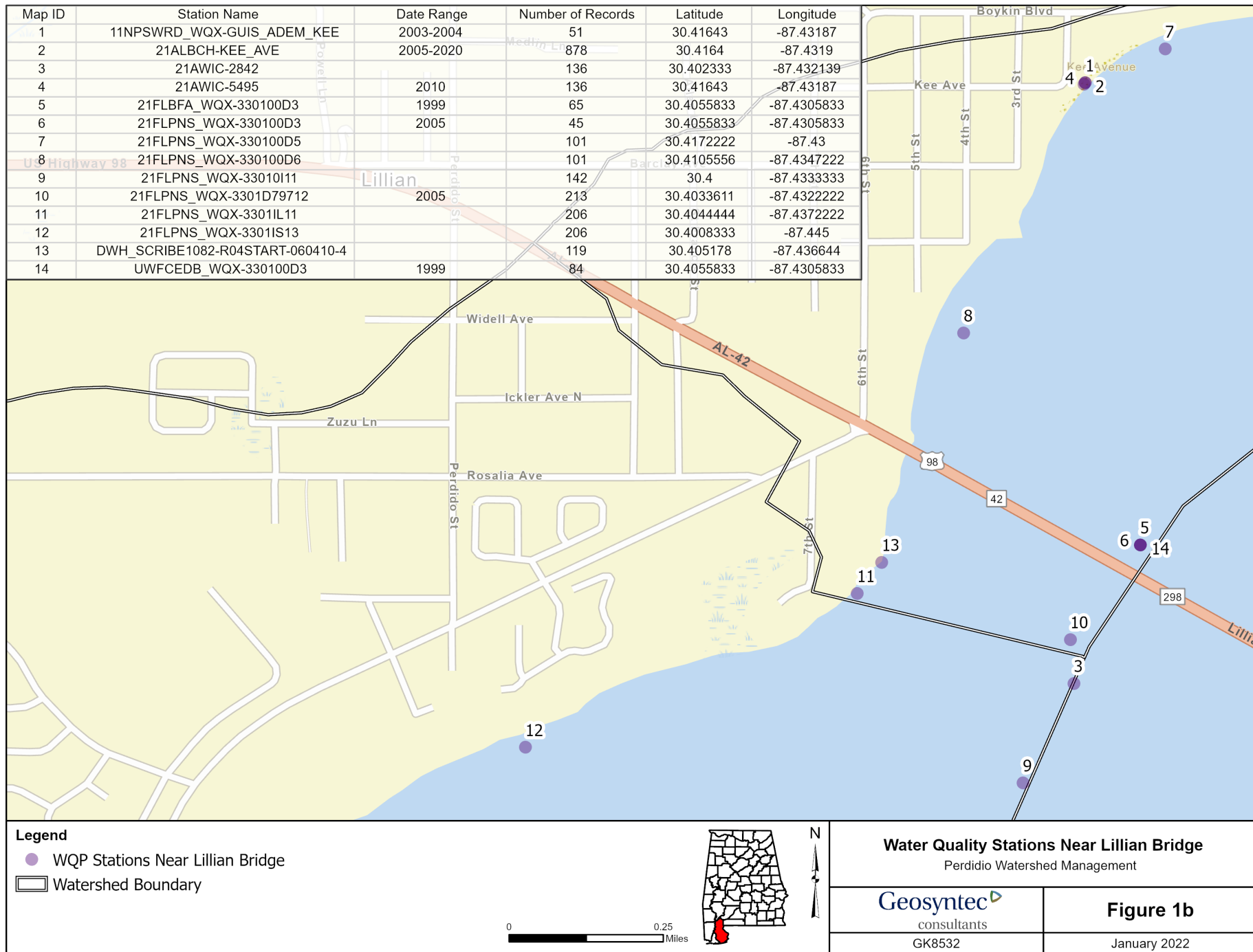
- i. What is being monitored?
- ii. What does the monitoring tell us?
- iii. What is not being monitored?
- iv. What it shows?
- v. What is not being monitored?
- vi. Where can we do volunteer monitoring?
- vii. What are we missing?

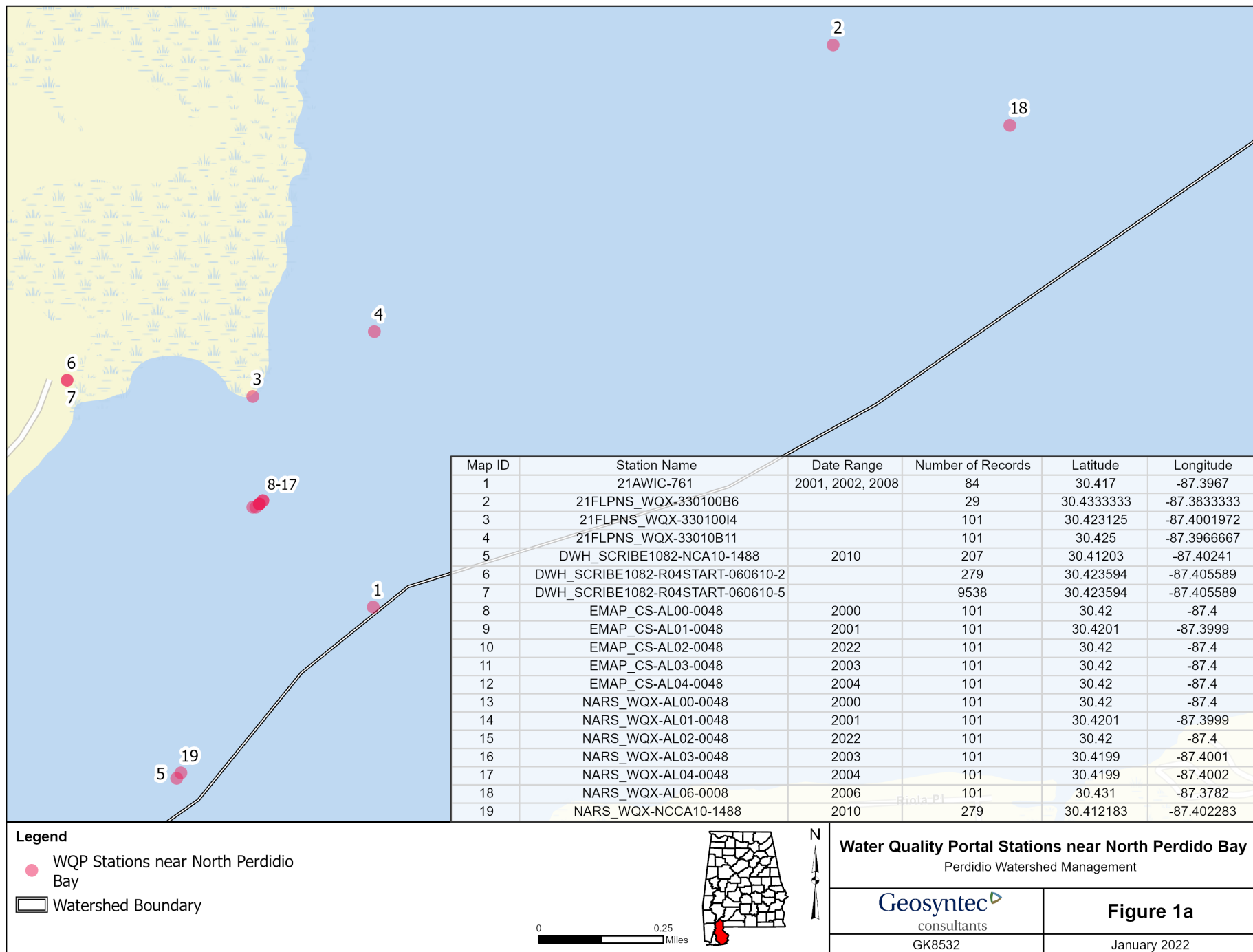




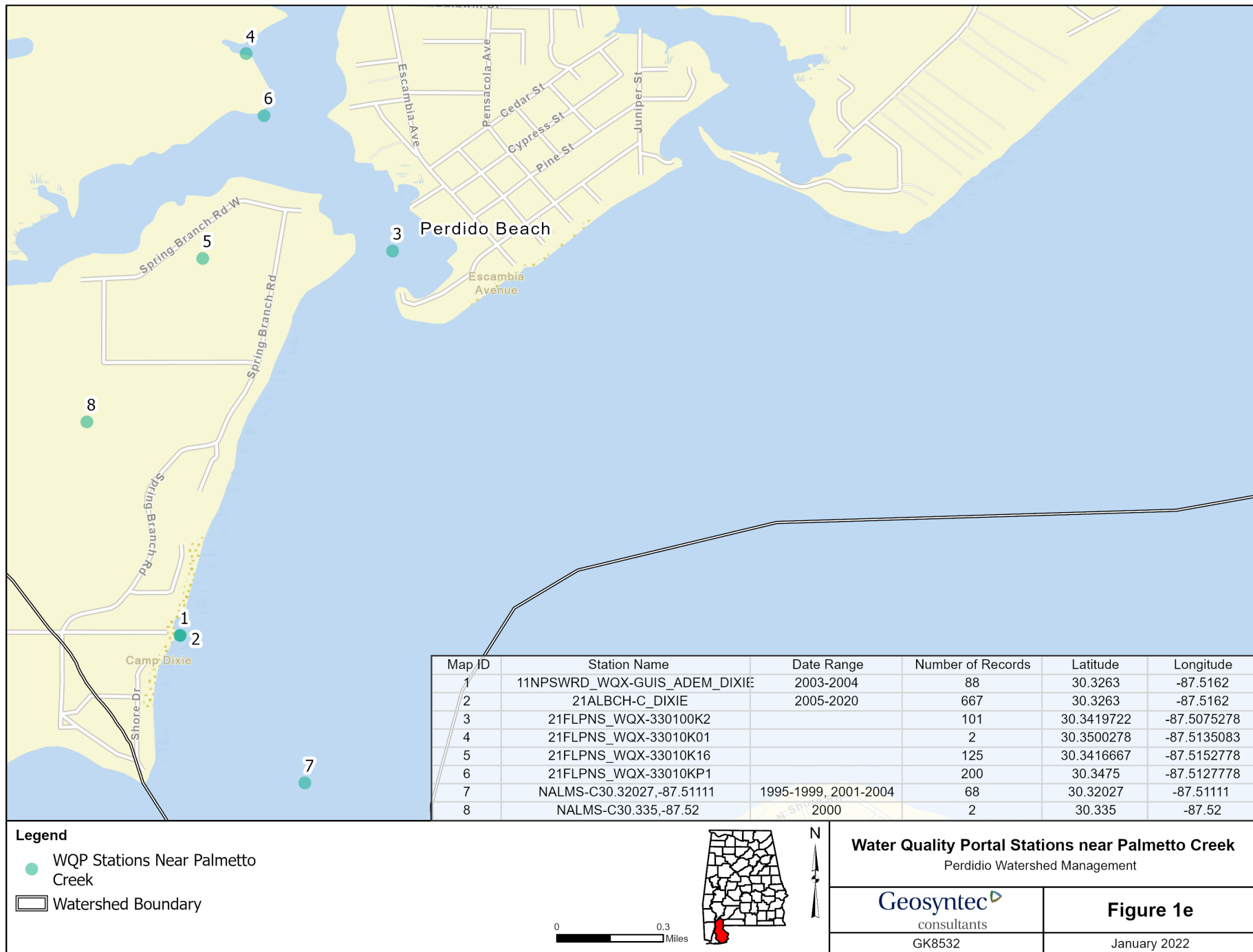


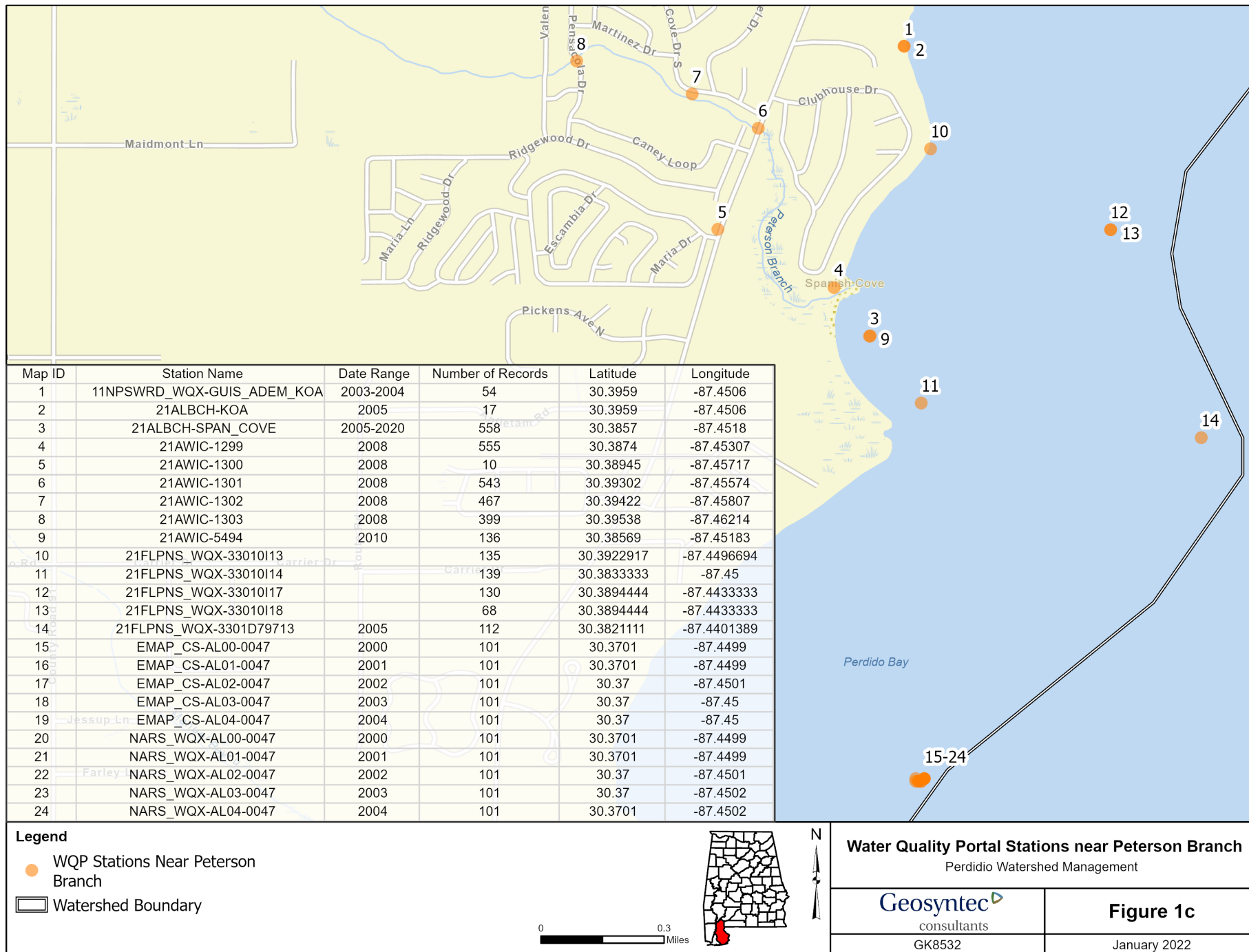


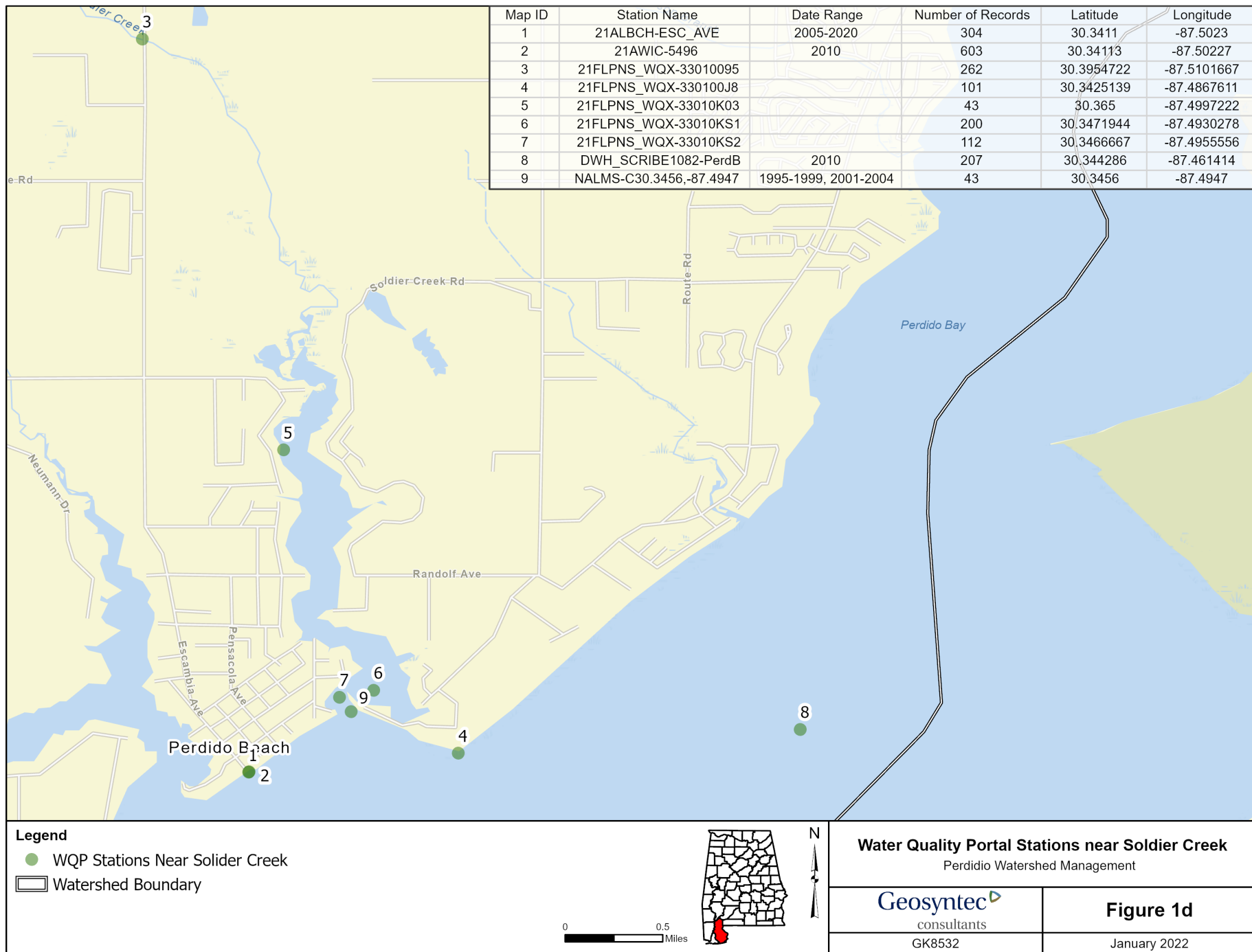














# SMART Objectives:

- Specific (simple, sensible, significant).
- Measurable (meaningful, motivating).
- Achievable (attainable, community support).
- Relevant (reasonable, results-based).
- Time bound (time-based, time limited, time/cost limited, timely, time-sensitive).

One that provides the  
"most bang for your buck"

One that addresses as  
many of the six things that  
people value most

One that is SMART

Caution!  
Exegetic not Eisegetic

## Identify Solutions

Determine load  
reductions needed

Develop management  
measures to achieve goals