

Alabama Gulf Ecological Management Site (GEMS)

The GEMS Program was established by the U.S. Environmental Protection Agency Gulf of Mexico Program and five gulf states to advance conservation efforts of coastal areas that represent unique habitats for fish, wildlife and other natural resources of particular significance.

Perdido River Corridor

Description

- The Perdido River Corridor contains roughly 120,000 acres of Alabama's largest and most ecologically significant blackwater watershed.
- The corridor begins at Dyas Creek in Baldwin County and ends where the river flows into one of the Gulf Coast's least developed areas in northern Perdido Bay.
- This corridor is characterized by sandy soils and a system of creeks and tributaries.
- The Perdido River serves as the boundary separating Florida and Alabama. The River ranges from 30 yards across in its upstream segments to over a half-mile across where it enters Perdido Bay. It is a sand-bottom river in its headwaters and a blackwater stream in its lower reaches.

Photo by paddlesolo

Beth Maynor Young © TNC

Protected and Managed Lands

Perdido River Wildlife Management Area (roughly 18,000 acres)

is located in Baldwin County and managed by the Alabama Department of Conservation and Natural Resources and the Forever Wild Land Trust.

➤ Alabama Department of Conservation and Natural Resources Tracts:

- **Perdido River WMA Longleaf Hills SLD Tracts (2,811 acres)** is located along the middle section of Perdido River.
- **Perdido River WMA SLD Tracts (930 acres)** is located along the middle section and the mouth of Perdido River.

➤ Forever Wild Land Trust Tracts:

- **Perdido River WMA - Swift Addition (163 acres)** is located near the mouth of Perdido River.
- **Perdido River - Longleaf Tracts (5,804 acres)** is located along the northern half and mouth of Perdido River.

Other Alabama Department of Conservation and Natural Resources Tracts:

- **Splinter Hill Bog SLD Tract (120 acres)** is located at the headwaters of Perdido River.
- **The Splinter Hill Bog - IP Addition SLD Tract (240 acres)** is located at the headwaters of Perdido River, south of the ADCNR Splinter Hill Bog SLD Tract.

- **Splinter Hill Bog - Ben May SLD Tract (366 acres)** is located at the headwaters of Perdido River, north of the FW Splinter Hill Bog-Ben May Tract.

Other Forever Wild Land Trust Tracts:

- **The Splinter Hill Bog - IP Addition Tract (264 acres)** is located in northern Baldwin County at the headwaters of Perdido River, south of the ADCNR Splinter Hill Bog-IP Addition SLD Tract.
- **Splinter Hill Bog-Ben May Tract (365 acres)** is located in northern Baldwin County at the headwaters of Perdido River, west of the FW Splinter Hill Bog - IP Addition Tract.

The Nature Conservancy Tracts:

- **Splinter Hill Bog Preserve - Carrigan Tract (246 acres)** is located in northern Baldwin County at the headwaters of Perdido River, west and south of the TNC Splinter Hill Bog Preserve.
- **Splinter Hill Bog Preserve (1,835 acres)** is located in northern Baldwin County at the headwaters of Perdido River, west of the ADCNR and FW Splinter Hill Bog-Ben May Tracts.

Perdido Mitigation Bank (750 acres)

is located in northern Baldwin County roughly six miles south of I-65 and two miles west of Perdido River.

Perdido River Corridor

Location

Alabama, Baldwin and Escambia counties

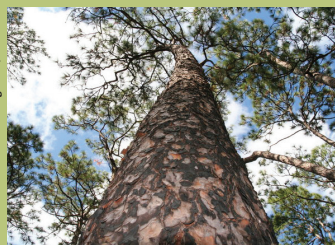
Relative Size

The GEM site is approximately 120,000 acres.



- Bon Secour NWR
- Lillian Swamp
- Lower Perdido Bay
- North Mississippi Sound
- Mobile Tensaw
- OB Maritime Forest-GSP
- Perdido River Corridor
- Weeks Bay NERR

Photo by Marc D. Anderson, Press-Register/AL.com



Longleaf Pine

Photo by Billy Pope/ADCNR



White-tailed Deer

Photo by Elizabeth Evans/US Army



American Chaffseed

Perdido River Corridor Facts:

- Habitats include: Coastal sandy wiregrass, acidic Plummer soil bogs, riparian buffers, marsh and forested wetlands, maritime forests, extensive longleaf pine forests, upland hardwood forests, pine savanna and American white cedar swamps.
- The Corridor offers habitat to over 63 endangered, threatened and rare species.
- The Corridor system provides groundwater recharge and directly affects the water quality in the Perdido River and Bay systems.
- It contains the majority of the remaining long leaf pine forest in Coastal Alabama and one of the largest strands of Atlantic white cedar in Alabama.
- The Perdido River Corridor is home to one of only two populations of the threatened American chaffseed in Alabama and contains the largest population of the imperiled Panhandle Lily in the world.

Beth Maynor Young © TNC

