



Western Perdido Watershed Steering Committee

Monday, March 21, 2022

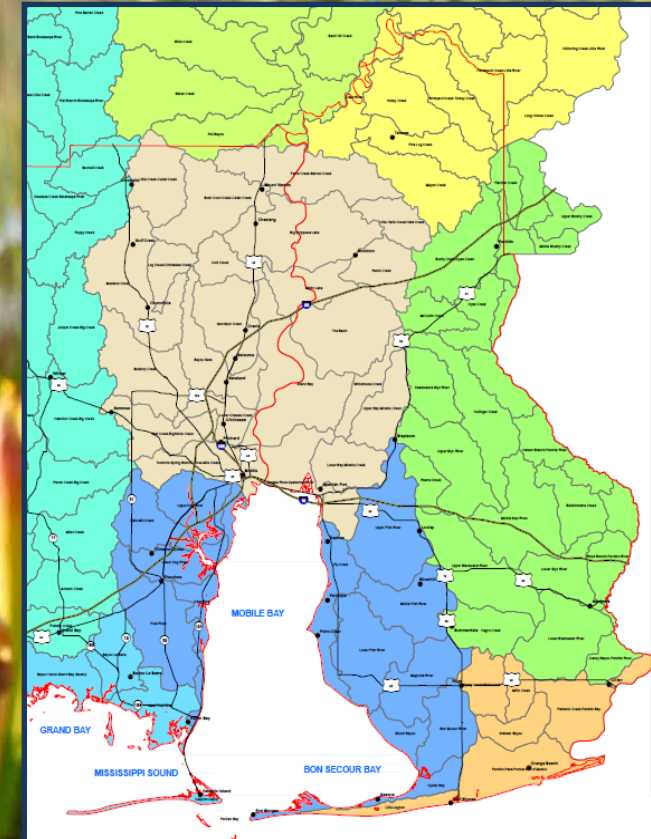
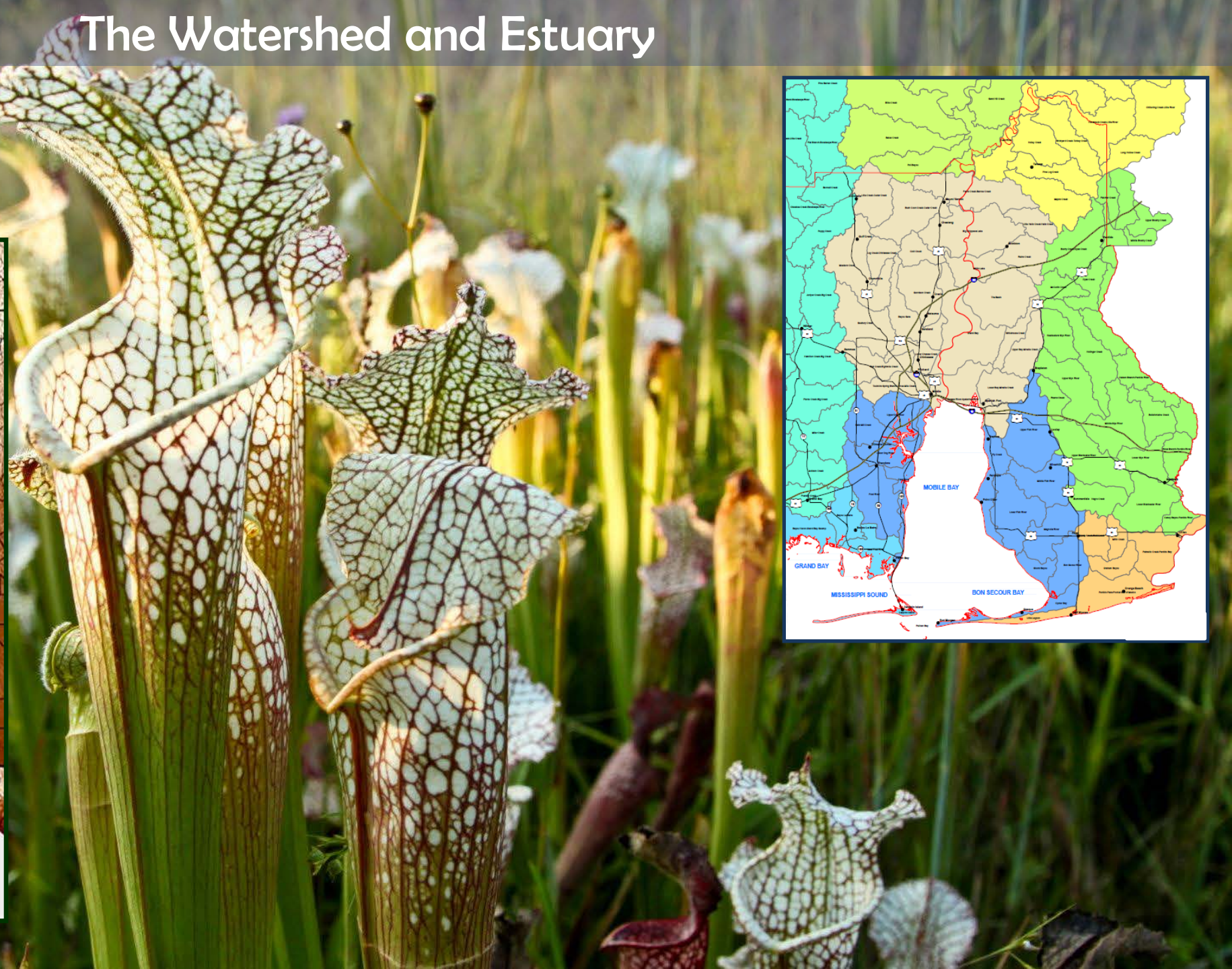
Christian Miller

Watershed Management Coordinator

Mobile Bay National Estuary Program



The Watershed and Estuary



A black and white photograph of Mobile Bay. In the foreground, there are several large, leafless trees with dark, intricate branch structures. The water is calm, reflecting the trees and the sky. In the background, the Mobile Bay skyline is visible, including the prominent, pointed spire of the Mobile Cathedral. The sky is overcast and grey.

The Mobile Bay National Estuary Program

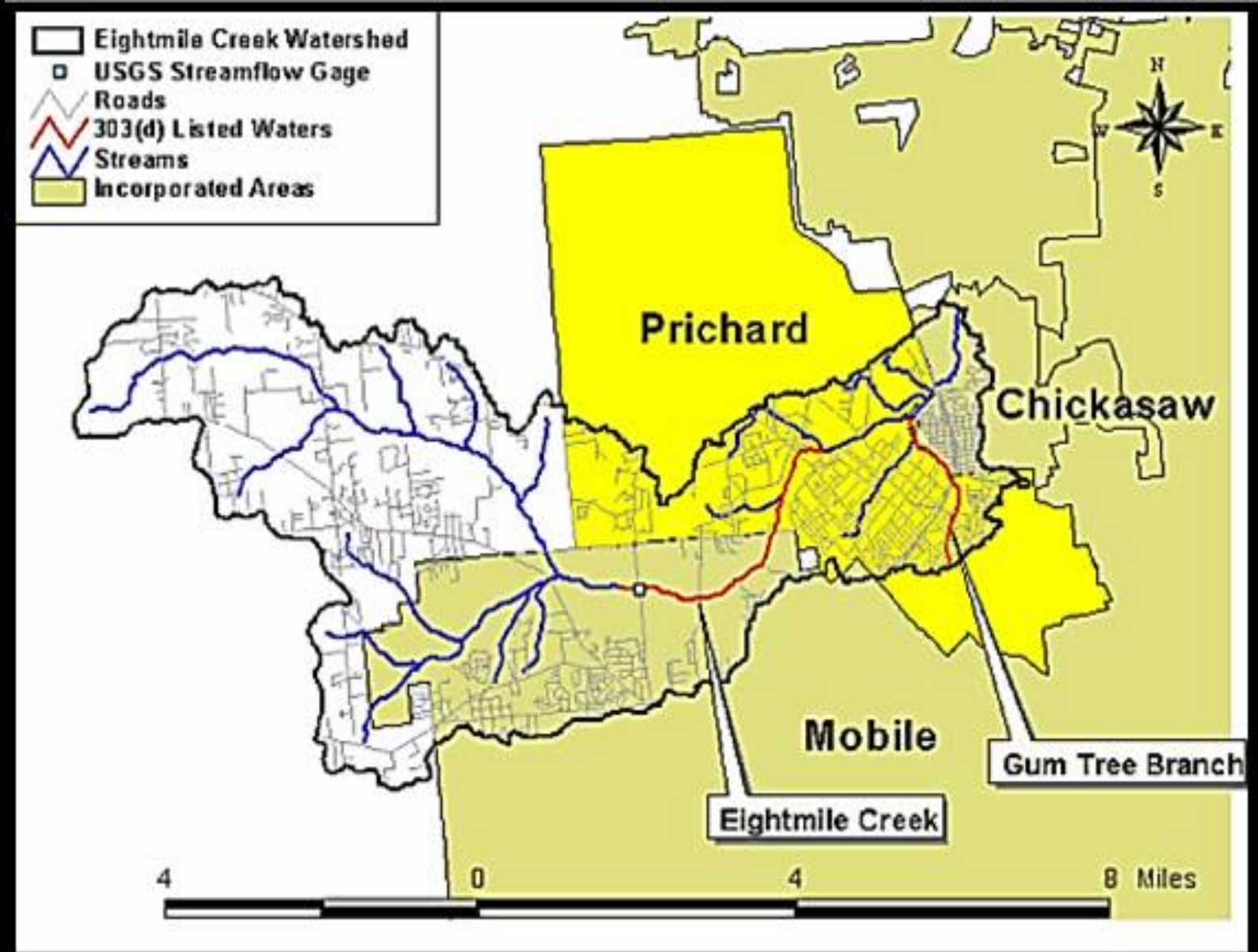
- Established in 1995
- Funded by US EPA, State of Alabama, Local Counties and Municipalities
- Formed a multi-sector “conference” of leaders
- Create/implement a Comprehensive Conservation and Management Plan

**Traditional
Approach...**

**Manage the
consequences
downstream**

**Watershed
Approach...**

**Manage the
system closest
to the source**



Goals of the watershed planning ...

- Improve water quality
- Improve habitats
- Protect continued uses of natural resources
- Improve watershed resilience
- Expand opportunities for community access
- Institutionalize Cooperation



What is in a Watershed Plan?

- **Partners-** key stakeholders, community input and concerns, ownership
- **Characterization of the Watershed-** history, uses, impairments, data gaps, SLR and storm surge scenarios, restoration/conservation, access opportunities
- **Goals and Identification of Solutions** management measures to achieve goals, funding alternatives
- **Implementation Program-** Initial actions, interim milestones, monitoring plan, education program

Why? ADEM funding *(originally...now BP priorities)*



How plans support coastal restoration

- Community *education and engagement*
- Identification of *restoration and protection* opportunities
- Recommendations prioritized on “*biggest bang for the buck*”
- Tool for local governments to *secure resources*
- Funder *Justification* for projects
- National Flood Insurance Program *discounts through the Community Rating System*





Watershed Restoration and Conservation

- Streambank & riparian buffer restoration
- Freshwater wetland restoration & conservation
- Shoreline stabilization/living shorelines
- Green infrastructure retrofits
- Invasive species management
- Trash management
- Tidal marsh restoration & conservation





Watershed Intergovernmental Cooperation

D'Olive Watershed Intergovernmental Task Force

- Consistent subdivision regulations changes
- Inclusion of LID practices in subdivision regulations
- Intergovernmental cooperation and use of resources

Three Mile Creek Watershed Public-Private Partnership

- Improved litter enforcement
- Incentives for LID

Fowl River Watershed Task Force

- Investigation of new water use category- "Outstanding Coastal Water"
- Establishment of Volunteer Monitoring Corps

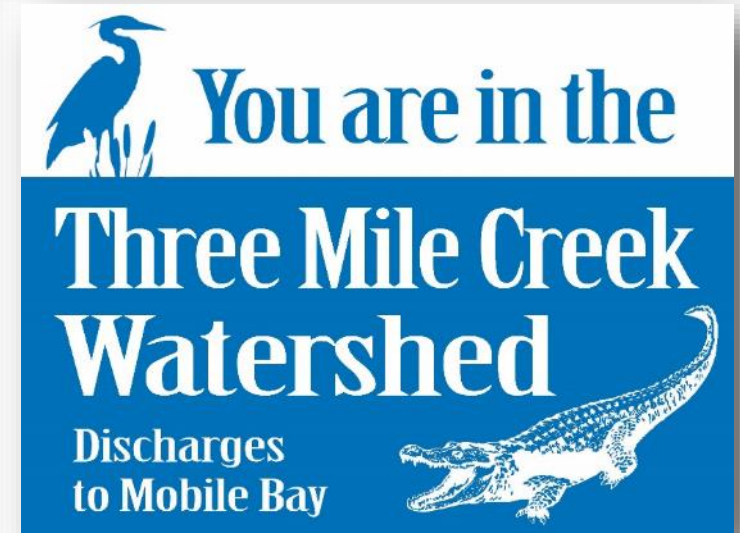
Plan Lower Alabama Now (Weeks Bay)

- Regional Stormwater Management
- Consistency in sub-division regulations



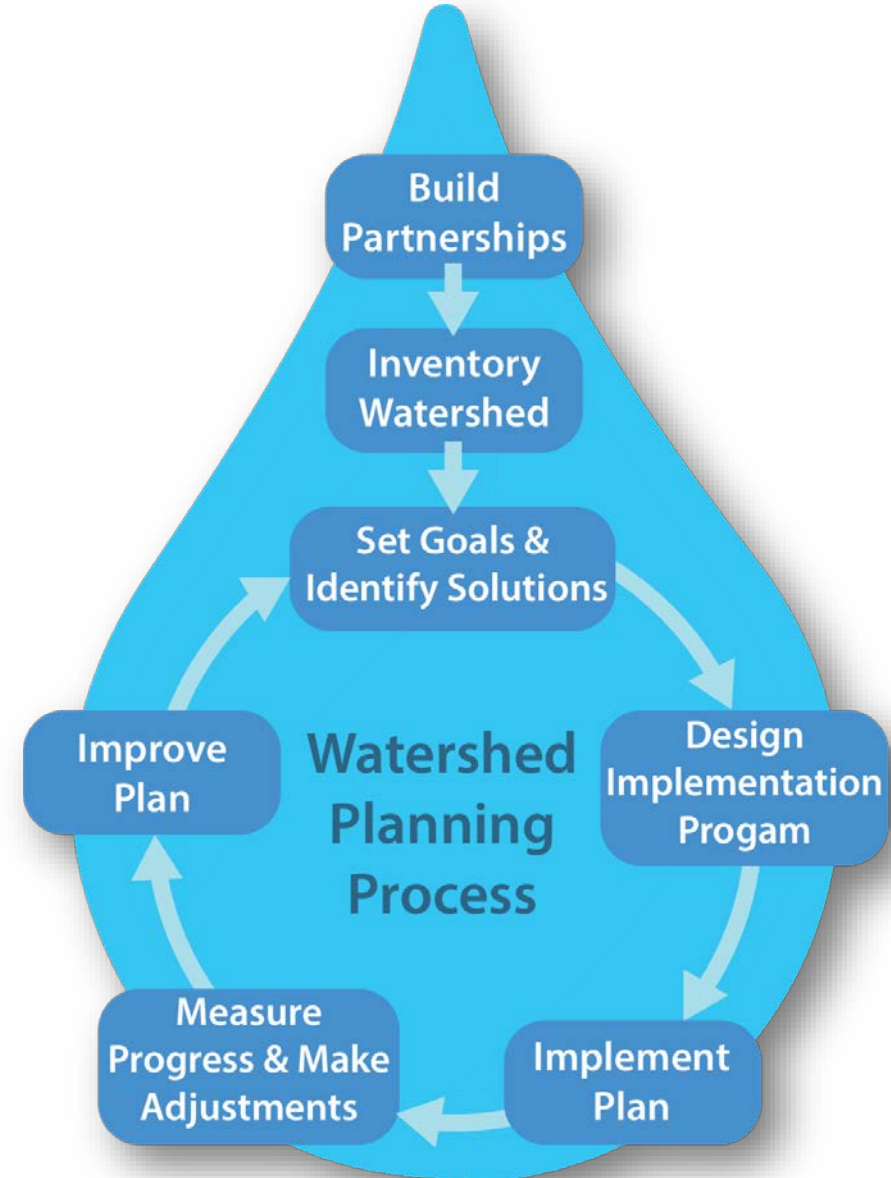
Watershed Plan Community Buy-In

- Volunteer WQ monitoring
- Rain barrel workshops
- Litter clean-ups
- Paddle trips
- Watershed signage



Watershed Planning Process

- EPA-established guidance
- Must also conform to NEP criteria
 - 6 Values
 - Most stressed habitats
 - State ACAMP Management Measures
- Community-driven process



Engaging the Watershed Community

- Stakeholders
 - People or organizations with a “stake” in the Watershed
- Steering Committee
 - A group of stakeholders formed to oversee and provide support during WMP development
- Benefits
 - Community is informed of what’s happening
 - Community has an opportunity to be actively involved in decision making
 - Implementation is more effective



Engaging the Watershed Community

- Steering Committee roles
 - **Support** the WMP process
 - **Inform** plan development
 - **Educate** others





WOLF BAY WATERSHED WATCH

THE GROWTH OF A SUCCESSFUL GRASSROOTS WATERSHED GROUP





IT ALL STARTED WITH A VISION



A group of concerned citizens who cared about the quality of our local waters and the watershed into which they flow.....

Grassroots Movement in 1998 driven by growth and water quality degradation

Followed similar programs in Weeks Bay and Mobile Water Watch through sampling water quality in affiliation with Alabama Water Watch

FIRST STEPS

Alabama Water Watch – water quality
monitoring of selected sites

Developed By Laws

Filed for 501(c)3 status

Board of Directors

Developed Mission and Goals





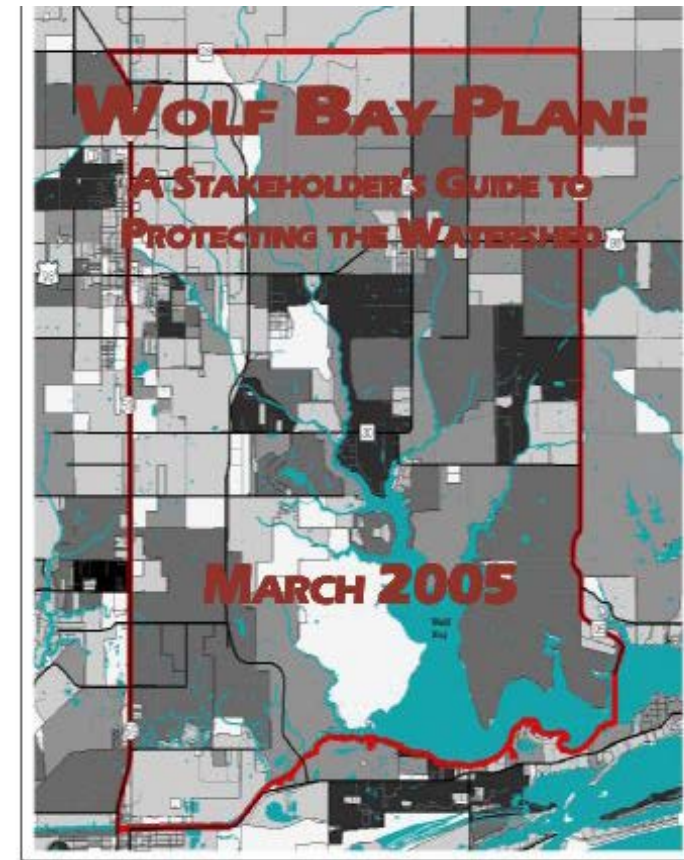
MISSION & GOALS

The primary purpose of the Wolf Bay Watershed Watch is to promote the conservation, protection and improvement of the natural resources within the Wolf Bay Watershed.

- Serve as advocates of the Wolf Bay Watershed
- Maintain a water quality monitoring program
- Provide stakeholders with water quality trend data and environmental information within the watershed
- Advocate for the watershed through legislation and educational programs
- Secure funding for the organization through membership, donations, fund raisers and grants

OUTSTANDING ALABAMA WATER (OAW) DESIGNATION

- 1997 - Monitoring water quality through Alabama Water Watch
- 1998 - Wolf Bay Watershed Watch was formed with the mission to promote the conservation, protection and improvement of the natural resources within the Wolf Bay Watershed through monitoring and educational programs.
- 2001 - Wolf Bay Watershed requested ADEM to upgrade portions of the watershed as an Outstanding Alabama Water (OAW) with Executive Director, Stan Mahoney, as the leader
- 2005 - “Wolf Bay Plan: A Stakeholder’s Guide to Protecting the Watershed”
- April 20, 2007 - Wolf Bay and several of its tributaries received OAW status
- Wolf Bay Watershed Watch grew up to 300 members. These efforts set a foundation to establish the Wolf Bay Watershed as a leader among grassroots organizations in Alabama.





FUND RAISERS

- Supplies for water monitoring and educational efforts needed funding
- Early ideas – recycling effort of aluminum, trash and treasures sale, native greenhouse plant sale, grants and fishing rodeo

- Stan Mahoney Youth Fishing Tournament

Started in 2003 with Riviera Utilities

Sponsorships over \$18,000

Youth and school teams totaling around 50 participants annually

Prizes include fishing gear and kayaks

Gets youth and families on the water

In 2021 partnered with AL Marine Resources to allow young children to fish their ponds



EDUCATION

- Funded Water Festival
- Grants for Education Programs in Schools
- Funded Title 1 Schools for fields trips to Graham Creek
- Assisted with Coastal Kids Quiz

Stan Mahoney Memorial Scholarship – Graduating Senior in pursuit of Environmental degree

Renewable for Junior or Senior Year of College with Essay

Given out close to \$40,000 in Scholarships since 2010

Jeremiah Battaglia

Civil Engineering

2021



Katy Hines

Biosystems Engineering

2016 and 2019



**Working for Volkert on Wolf
Creek Restoration Project**

ENGAGEMENT

Why be a Member?

Low Membership Dues (\$20 per family annually)

Newsletter of Events

Annual Meeting with Relevant Local Topics & Potluck following

Scholarship Recipient Meeting

Active Board on County and Municipal Issues



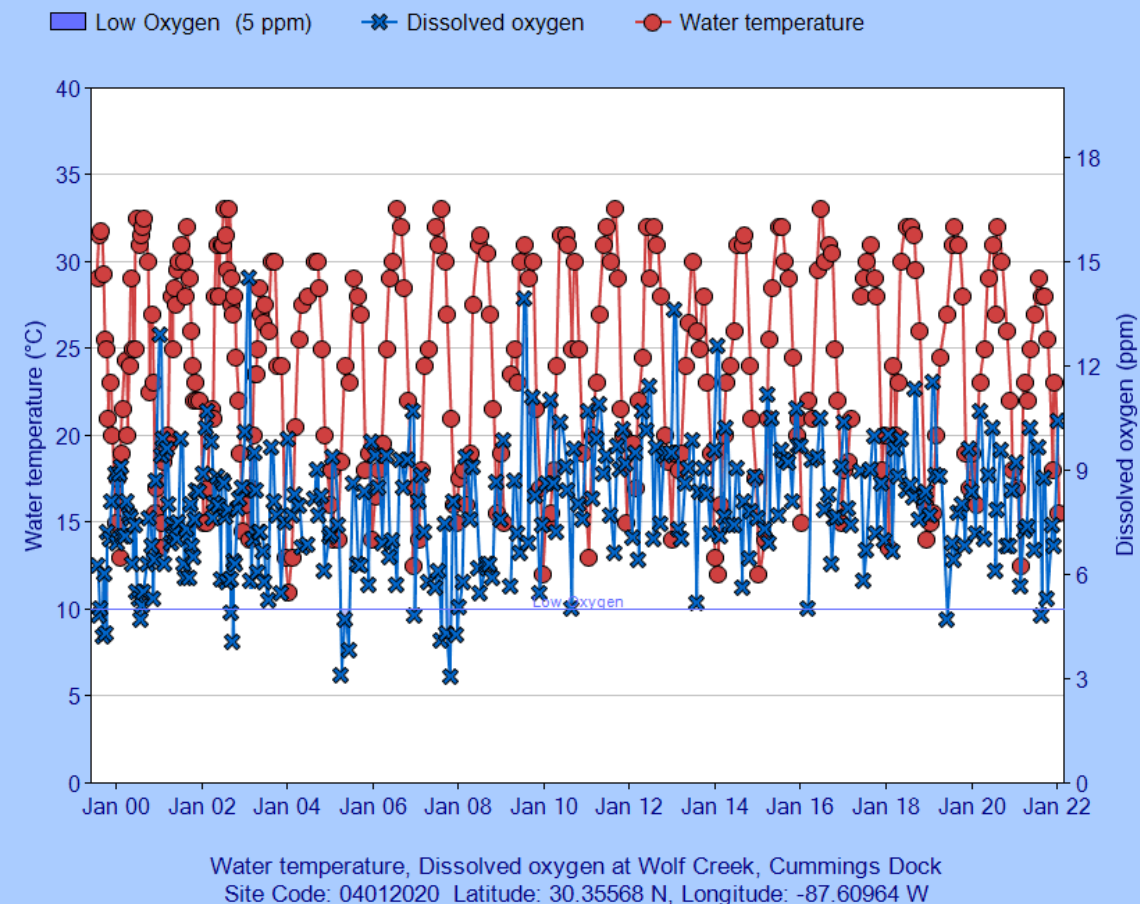
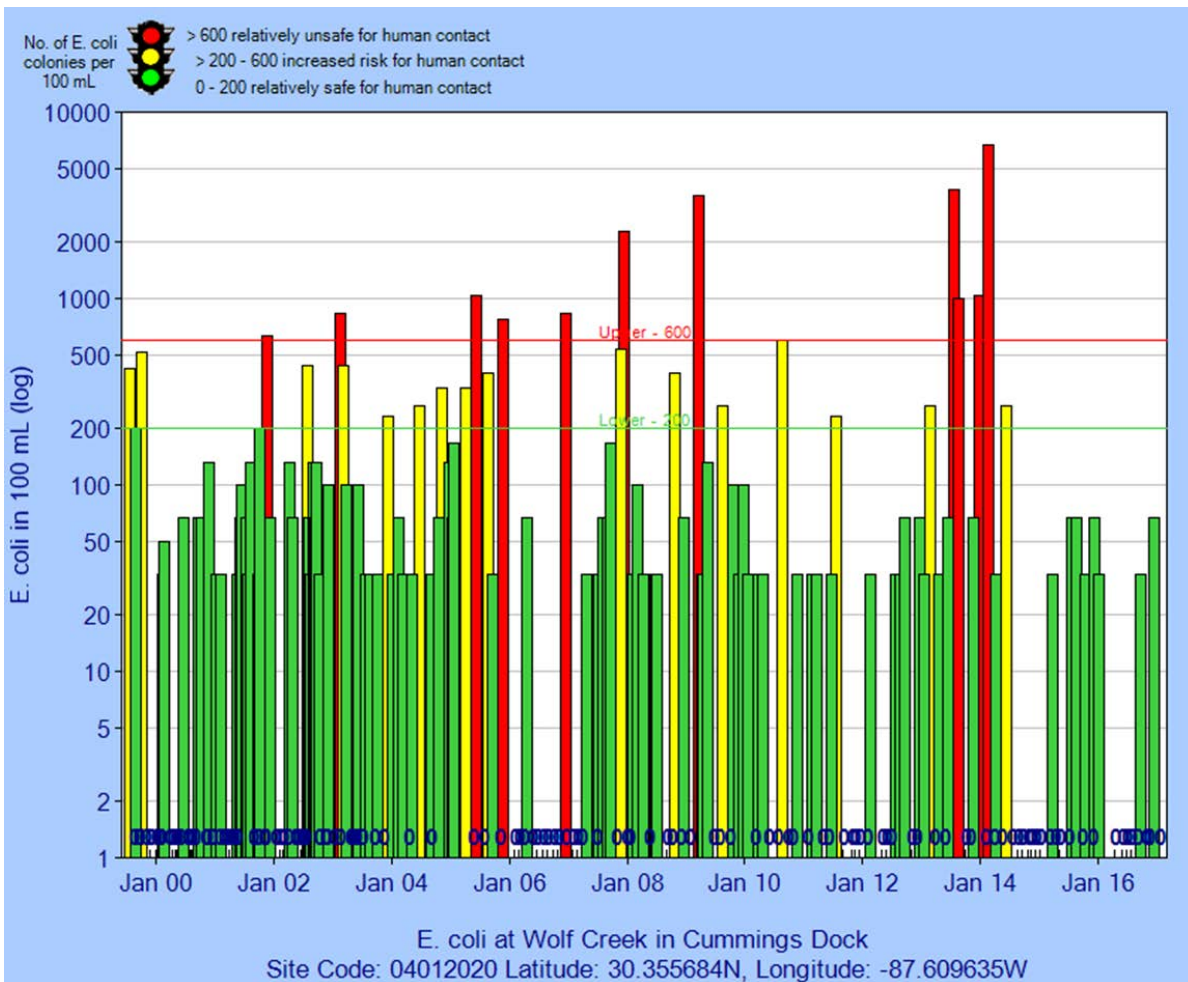


ALABAMA COASTAL CLEANUP – SITE ON WOLF CREEK





LONGSTANDING MONITORING RESULTS



FINANCIAL SUCCESS

Funds used to carry out Mission

Investment of funds from successful years

Now self sustaining

WBWW 2021 Financials

	2016	2017	2018	2019	2021	
<u>Income</u>						
Fishing Tournament	\$4,021	7,709	21,911	13,511	18,877	49% CAGR
Public Support	729	854	895	800.	1,370	
Merchandise Sales		180	47	25.	-	
Total Income	4,750	8,743	22,853	14,336.	\$20,247	43% CAGR
<u>Expenses</u>						
Administrative	-	-	928	575.	714	35% CAGR
Equipment/Supplies	\$1,561	2,556	1,115	1,165.	48	
Scholarships	2,000	2,000	5,000	7,750.	6,000	
Food/Entertainment	192	248	456	357.	182	
Donations	-	-	100	100.	-	
Coastal Cleanup	79	164	197	169.	-	
Total Expenses	3,832	4,968	7,796	10,116.	6,944	15% CAGR
Net Income:	\$918	\$3,775	\$15,057	\$4,220.	13,303	95% CAGR
=====						
**Scholarships+Equip & Supplies						
expressed as a %age of Expenses:			78%	88%.	86%	
 Assets as of Yr End:						
Bank Account	\$8,754	12,819	23,724	27,518	18,699	
Investment Account	59,776	64,553	62,783	71,145	110,493	
Total Assets	\$68,530	77,372	86,507	98,663	\$129,192	17% CAGR

****2022 Projected Investment Income=**
\$2,395



THANK YOU



wolfbaywatershedwatch@gmail.com



www.wolfbaywatershedwatch.org

Leslie Gahagan, President
251-923-4267

