

# **MOBILE BAY NATIONAL ESTUARY PROGRAM EXECUTIVE COMMITTEE MEETING**

**MAY 26, 2022**

**HYBRID MEETING- INTERNATIONAL TRADE CENTER / ZOOM VIRTUAL**



**Good Morning!**  
**Please sign-in by putting your name and  
organization in the chat box.**

**Please note: this meeting is being recorded**



## AGENDA

- Introductions/Call to Order
- Approval of Minutes
- Director's Report
- Committee Reports
  - Science Advisory
  - Project Implementation
  - Government Networks
  - Community Action
  - Business Resources
  - Finance
- Old Business
- New Business
- Other/Announcements
- Adjourn



# DIRECTOR'S REPORT



## FISCAL IMPACT ANALYSIS DAUPHIN ISLAND, AL

PREPARED FOR THE MOBILE BAY NATIONAL ESTUARY  
PROGRAM

March 18, 2022

**PREPARED BY:**

**PHILIP G. KING, PH.D.**

Professor of Economics, San Francisco State University

**SARAH JENKINS, B.S. B.A.**

Research Associate in Economics

With Assistance from Kiersten Patsch, Ph.D.

Professor of Environmental Science and Resource Management, California State University Channel Islands

## Coastal Zone Act Reauthorization Amendment (CZARA)



# Save THE Date

**Alabama-Mississippi  
Bays & Bayous Symposium**

**January 23-25, 2023**

Arthur R. Outlaw  
Mobile Convention Center

The Mobile Bay National Estuary Program and partners invite you to join them in the historic city of Mobile, Alabama, to share information on the status of research, monitoring activities, on-the-ground restoration, citizen actions, and education focused on the health of our Coastal environment.

[baysandbayous.com](http://baysandbayous.com)

# CCMP TIMELINE & ACTIVITIES



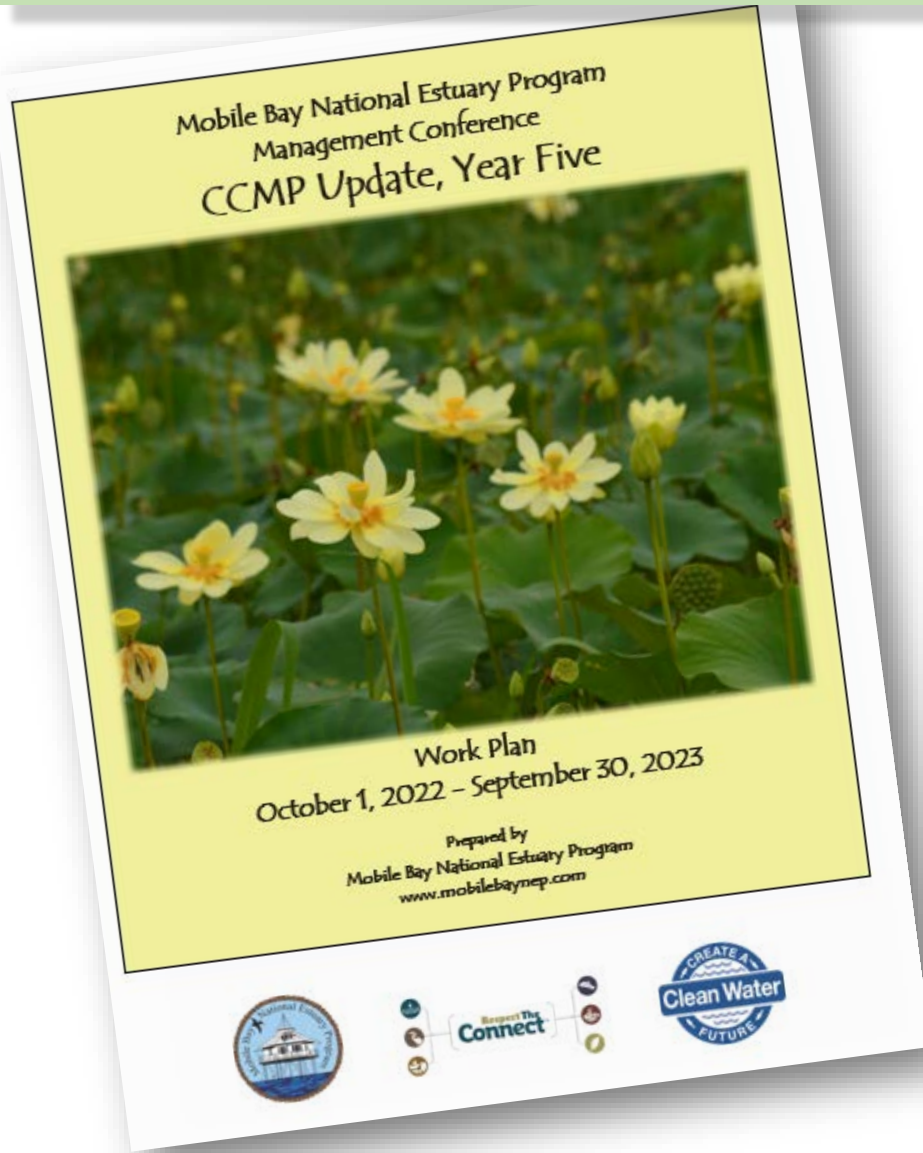
CCMP Rewrite Components		Past Year EPA (Reprogrammed)	Year 5 Funding 2022-2023
Community Input	<ul style="list-style-type: none"> <li>• Compilation of Input</li> <li>• Demographic Changes/Community Perceptions</li> <li>• Engaging underserved communities</li> <li>• Socioeconomic assessment</li> </ul>	60,000	
CCMP Implementation Assessment	<ul style="list-style-type: none"> <li>• Evaluation of efforts</li> <li>• Inventory of activities</li> <li>• Outcomes/Gaps</li> <li>• Areas for further study</li> <li>• Value added</li> </ul>	60,000	
Environmental Stressor Assessment/Data Development	<ul style="list-style-type: none"> <li>• Levels of environmental stress</li> <li>• Data compilation/development needs</li> </ul>	50,589	
Management Conference Engagement and Strategy Development	<ul style="list-style-type: none"> <li>• Education about findings</li> <li>• Strategy development</li> </ul>		100,000
CCMP Document	<ul style="list-style-type: none"> <li>• Publication of CCMP for 2023-2028</li> </ul>		50,000

170,589

150,000

# YEAR 5 BUDGET

## 2022 - 2023



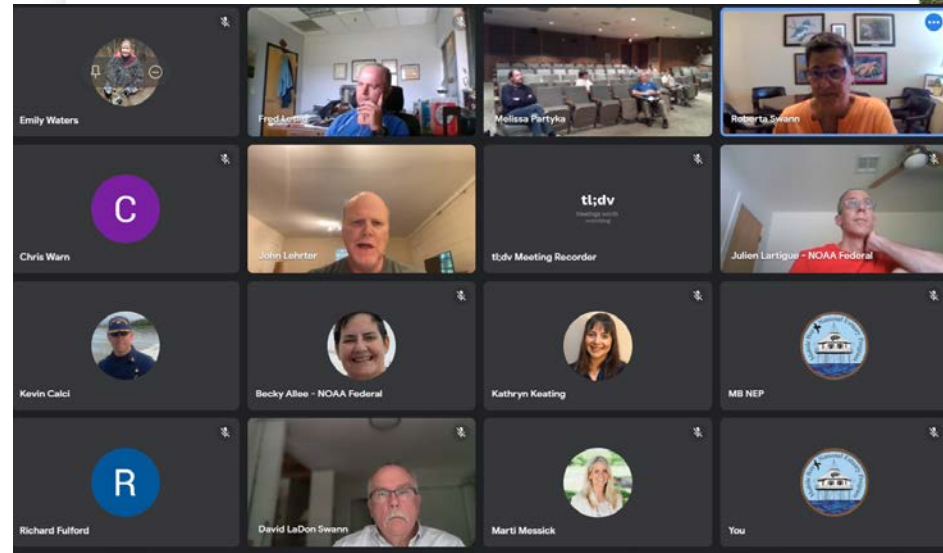
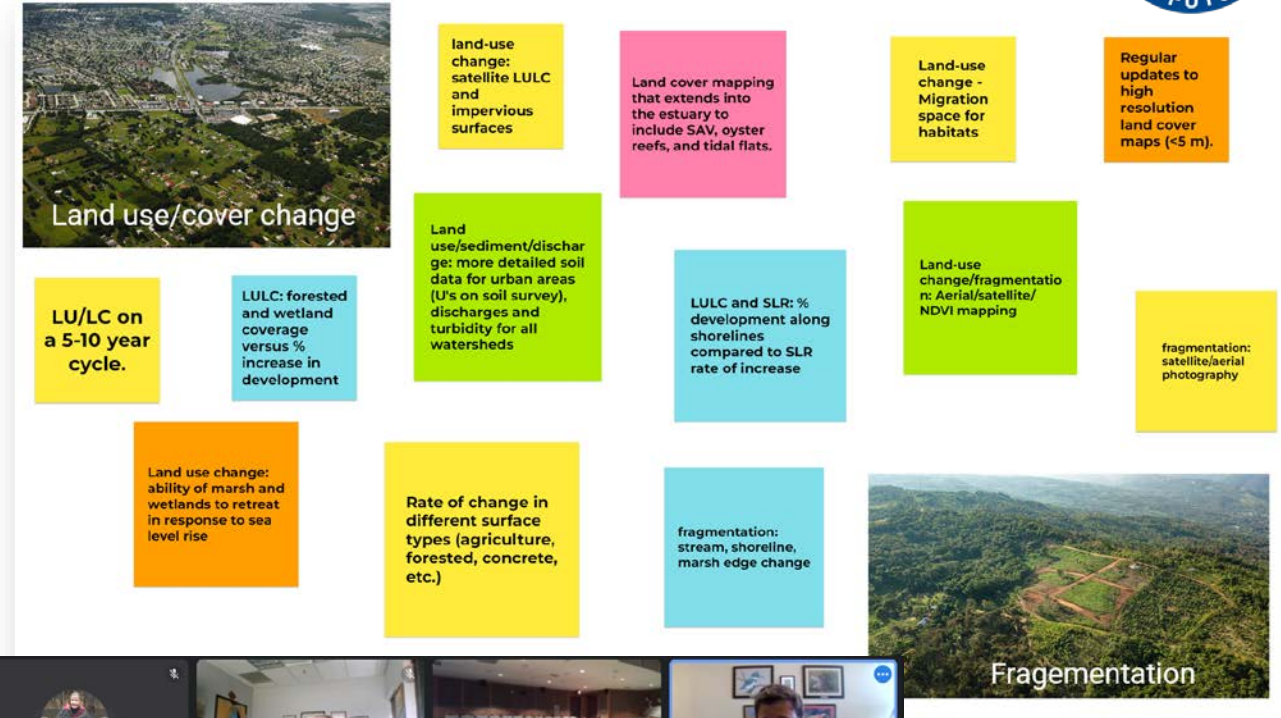
	Year U1: 2018-2019	Year U2: 2019-2020	Year U3: 2020-2021	Year U4: 2021-2022	Reprogrammed Dollars (All Years)	Year U5: 2022-2023 BUDGET	Total All Years
<b>Revenues</b>							
<b>Total Available Budget</b>	<b>997,076</b>	<b>953,488</b>	<b>1,086,188</b>	<b>1,174,600</b>	<b>-</b>	<b>1,248,212</b>	<b>5,451,452</b>
EPA Annual Appropriation	625,000	600,000	662,500	700,000		750,000	3,337,500
Match (Actuals)	372,076	353,488	423,688	474,600		490,100	2,113,952
Net Surplus/(Deficit) from previous year						8,112	
<b>Expenses</b>							
<b>Estuary Status and Trends</b>	<b>45,000</b>	<b>-</b>	<b>25,000</b>	<b>85,000</b>	<b>(14,873)</b>	<b>27,000</b>	<b>167,127</b>
EST 1: Coastal Monitoring Program	45,000		25,000	65,000	(74,873)	27,000	87,127
EST 2: Environmental Monitoring/ Communication				20,000	60,000		80,000
EST 3: Ecosystem Modeling, Research, Evaluation Program							-
<b>Ecosystem Restoration and Protection</b>	<b>20,000</b>	<b>23,000</b>	<b>35,434</b>	<b>9,000</b>	<b>89,708</b>	<b>-</b>	<b>177,142</b>
ERP 1: Watershed Planning	20,000	18,000			57,208		95,208
ERP 2: Watershed Implementation- D'Olive Restoration							-
ERP 2: Watershed Implementation- Reserve			15,434		32,500		48,934
ERP 2: Watershed Implementation- Lower Fish River Restoration							
ERP 3: Shoreline Stabilization, Enhancement- DI Causeway							-
ERP 3: Shoreline Stabilization, Enhancement- Deer River							-
ERP 3: Shoreline Stabilization, Enhancement- Fowl River Spits							-
ERP 4: Invasive species Management- Three Mile Creek			15,000		-		15,000
ERP 5: Access Enhancements- ADA Accessibility		5,000	5,000	9,000			18,000
<b>Technical Assistance and Capacity Building</b>	<b>7,500</b>	<b>-</b>	<b>50,000</b>	<b>5,000</b>	<b>(23,216)</b>	<b>10,041</b>	<b>49,325</b>
TAC 1: Fisheries Capacity Building			50,000		(45,000)		5,000
TAC 2: Business Capacity Building							-
TAC 3: Government Capacity Building-Training				5,000	5,000		10,000
TAC 4: Grassroots Capacity Building- Citizen Monitoring	7,500				16,784	10,041	34,325
<b>Education and Public Involvement</b>	<b>74,541</b>	<b>94,452</b>	<b>43,031</b>	<b>49,528</b>	<b>141,581</b>	<b>180,448</b>	<b>583,581</b>
EPI 1: Private Sector Education Program				7,000	-		7,000
EPI 2: Private Sector Involvement Program				-	-		-
EPI 3: Community Education Program- Newsletter	8,000	8,000	8,000	7,000	-	8,000	39,000
EPI 3: Community Education Program- Signage	5,000		4,000	2,000	-		11,000
EPI 3: Community Education Program- Video Production/Digital Media	30,000	19,952	8,783	18,912	(8,200)	5,000	74,447
EPI 4: Create a Clean Water Future Campaign- Trash programming	15,041		5,000	3,616	35,000		58,657
EPI 5: Community Event Program- Special Event sponsorships	7,500	7,500	3,500	8,000	-	10,000	36,500
EPI 5: Community Event Program- Special Event outreach materials	5,000	5,000	3,748	3,000	-	2,500	19,248
EPI 5: Management Conference Support	4,000	54,000	10,000		(55,808)	4,948	17,140
EPI 5: CCMP Rewrite					170,589	150,000	320,589
<b>Management and Program Administration</b>	<b>832,047</b>	<b>889,724</b>	<b>931,111</b>	<b>987,072</b>	<b>(196,400)</b>	<b>1,030,724</b>	<b>4,474,278</b>
Program Delivery/Operation	707,601	758,353	789,644	838,950	(196,400)	867,914	3,766,062
Indirect Charges	124,446	131,371	141,467	148,122	(0)	162,810	708,216
<b>Total EPA Budget</b>	<b>979,088</b>	<b>1,007,176</b>	<b>1,084,576</b>	<b>1,135,600</b>	<b>(3,200)</b>	<b>1,248,212</b>	<b>5,451,452</b>
Match Budget vs. Actuals Surplus/(Deficit)	17,988	(53,688)	1,612	39,000			

# SCIENCE ADVISORY COMMITTEE



## SAC Meeting: May 20, 2022 (Hybrid- virtual/in-person)

- Discussed monitoring priorities highlighted during brainstorm session last meeting
- Broadly discussed ways in which the SAC can help to synthesize priorities in WMPs
- Next steps: subcommittees to help set targets for inclusion in CCMP update

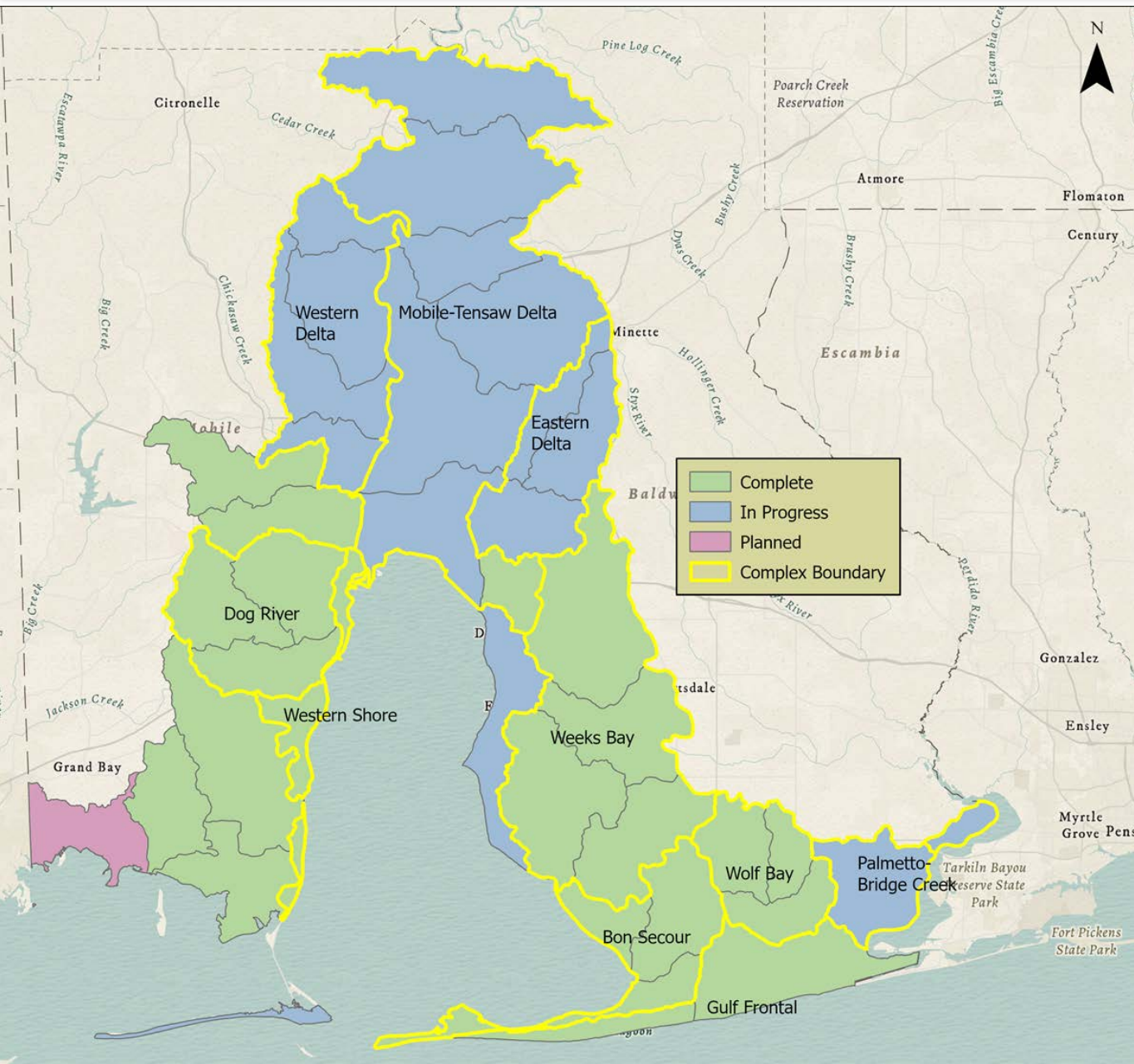


## PIC Meeting: May 19, 2022 *(Virtual)*

- Themed agendas continued to focus on a watershed – Mississippi Sound
- Held another off-cycle topical meeting. Committee members toured D'Olive restorations on April 13.
- Next meeting: August 11



# WATERSHED PLANNING UPDATE



Watershed	Status
Western Shore	Complete
Gulf Frontal	Complete
D'Olive Update	Complete
MTA Delta	In progress – Final June '22
Eastern Shore	In progress – Final July '22
Dauphin Island	In progress – Final July '22
Western Perdido	In Progress
Western Delta	In Progress
Eastern Delta	In Progress
Grand Bay	On Deck

# RESTORATION PROJECTS UPDATE



## D'Olive

- Pine Run community meeting & landowner access
- Canterbury construction wrapping up

## Lower Fish River

- Marlow project is ~50% complete
- Magnolia River Watershed E & D and landowner access underway for all 3 projects.

## Fowl River

- 60% design and permitting ongoing.

## Deer River

- Completed supplemental field work to inform additional restoration alternatives.



## GNC Meeting: May 26, 2022

*(Hybrid- virtual/in-person)*

- U.S. Army Corps of Engineers provided and overview of the Alabama Coastal Comprehensive Plan
- Reviewed South Alabama Regulatory Review Update
  - Pre/Post Construction Stormwater Mngt
  - Natural Resource Protection
  - Coastal Issues (shorelines)
  - Trash/Litter

### The Mobile Bay National Estuary Program

#### South Alabama Stormwater Regulatory Update

September 2021

**Prepared For:**

The Mobile Bay National Estuary Program

118 North Royal Street – Suite 601

Mobile, Alabama 36602

**Prepared By:**

John Carlton, CPESC

33507A US Highway 31

Spanish Fort, Alabama 36527



This report has been prepared under contract PO # 43223, 490-5550-3600-2900-EW-MC

## CAC Meeting: May 10, 2022 Meeting Rescheduled

### Last Meeting February 8, 2022

- Meeting Topic: Grassroots organizations involved in the CAC shared strengths and weaknesses related to growing and retaining their memberships

### May 10<sup>th</sup> Meeting rescheduled for June 8, 2022, due to Committee availability

- Meeting Topic: Discuss needs of individual volunteer water quality monitor groups for the purpose of increasing the monitoring network across Coastal AL



## BRC Meeting: March 18, 2022 *(In-person)*

### Coastal Alabama Fisheries Fund

- 60 farmers and catchers attended March meeting
- 6 applications in review
- 2 business development sessions conducted in Bayou la Batre



### OystersAlabama.com

- Unique visitors nearly doubling monthly
- Connecting wholesalers to farmers and distributors
- Partnership with "Sweet Grown Alabama" in development



## A CAUSE TO CLEAN

- Causeway clean-up organized with PEP and TC Boiler
- 100+ 55-gallon bags of trash and 30 tires picked up
- 70 volunteers from 17 businesses

## Alternative Packaging

Committee developing strategy to permanently reduce plastic and styrofoam use in Baldwin County businesses



# FINANCE COMMITTEE



## INTERAGENCY MEMORANDUM OF AGREEMENT

**Baldwin County Commission  
and  
Marine Environmental Sciences Consortium dba  
Mobile Bay National Estuary Program**

**This Agreement is entered into between the MARINE ENVIRONMENTAL SCIENCES CONSORTIUM THROUGH ITS MOBILE BAY NATIONAL ESTUARY PROGRAM (hereinafter referred to as the "MBNEP") and the BALDWIN COUNTY COMMISSION, the governing body of Baldwin County, Alabama (hereinafter referred to as the "COUNTY").**

**Whereas**, Mobile Bay and Alabama's estuaries, fed by the fourth largest river system in the United States and representing some of the most biologically diverse ecosystems in North America, are invaluable resources for the State and local communities in Baldwin County and the health of the aforementioned is deeply intertwined to the heritage and economy of coastal Alabama;

**Whereas**, Baldwin County's population is projected to grow over 65% through 2040 and the conversion of natural landscape to impervious cover has caused increases in volume and velocity of stormwater runoff resulting in increased flooding; non-point source pollution impacts that include trash and litter, pathogens, and nutrients; channel erosion; degraded habitats and infrastructure; and deteriorated water quality in its tributaries and creeks that ultimately transport non-point source pollution and sediment into Perdido and Mobile bays;

**Whereas**, the COUNTY has a long-term interest in maintaining the quality of local waters and natural areas, reducing negative impacts associated with stormwater runoff, increasing resilience and preserving the cultural character of coastal communities, ensuring bountiful populations of fish and wildlife, and providing access to its natural areas;

**Whereas**, the MBNEP has long term interest in the provision of information and science to citizens and decision makers for the development of sound public policy for the management of the coastal resources of Alabama, particularly through implementation of a Comprehensive Conservation and Management Plan (CCMP) for Alabama's estuaries; and

**Whereas**, the MBNEP was recognized by the USEPA as one of 28 estuaries of national significance with a mission to promote the wise stewardship of the water quality and living resource base of Alabama's estuaries and coast; with the purpose of bringing together engaged and diverse communities committed to developing consensus on what our ecosystem priorities are, how to achieve them, and how to facilitate and promote their implementation; and

**Whereas**, the COUNTY recognizes the purposes for which the MBNEP was organized to include the protection and conservation of Alabama's estuarine systems which benefit and protect Baldwin County's environment and the overall well-being of its residents and visitors within the MBNEP service area, including the entirety of Baldwin County.



*May 2022 Meeting is  
being rescheduled*



- OTHER
- ANNOUNCEMENTS
- ADJOURN

**Upcoming Meetings:**

Friday, August 26

Friday, December 2

