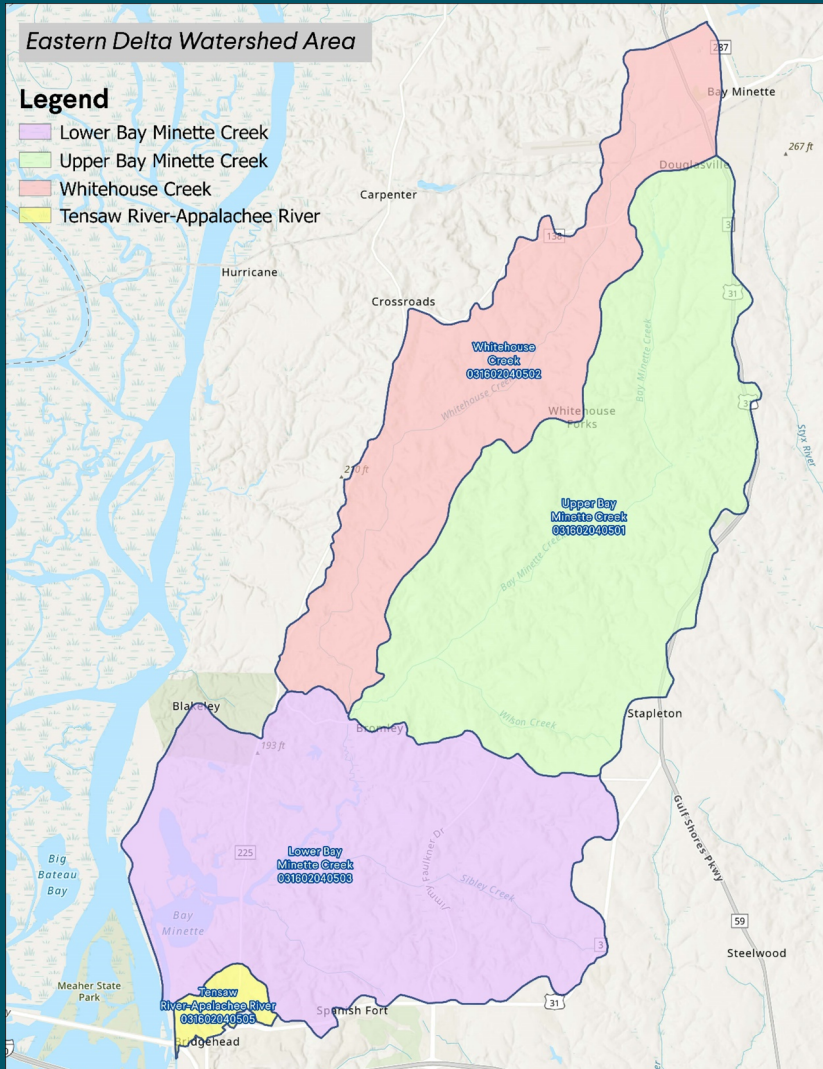


# About the Eastern Delta Watershed



The Eastern Delta Watershed includes Whitehouse Creek, Upper Bay Minette Creek, and Lower Bay Minette Creek watersheds in Baldwin County, Alabama. These areas encompass approximately 49,191 acres that drain directly into Bay Minette Creek and ultimately into Blakeley River and Mobile Bay. The Mobile Bay National Estuary Program (MBNEP) is currently developing a Watershed Management Plan for the watershed to identify ways to preserve, protect, and enhance the watershed's natural, recreational, and economic assets.