

# **Coastal Alabama Restoration and Environmental Management: A Watershed Approach**

**Dauphin Island Sea Lab  
September 8, 2016**



Roberta Swann, Director  
Mobile Bay National Estuary Program

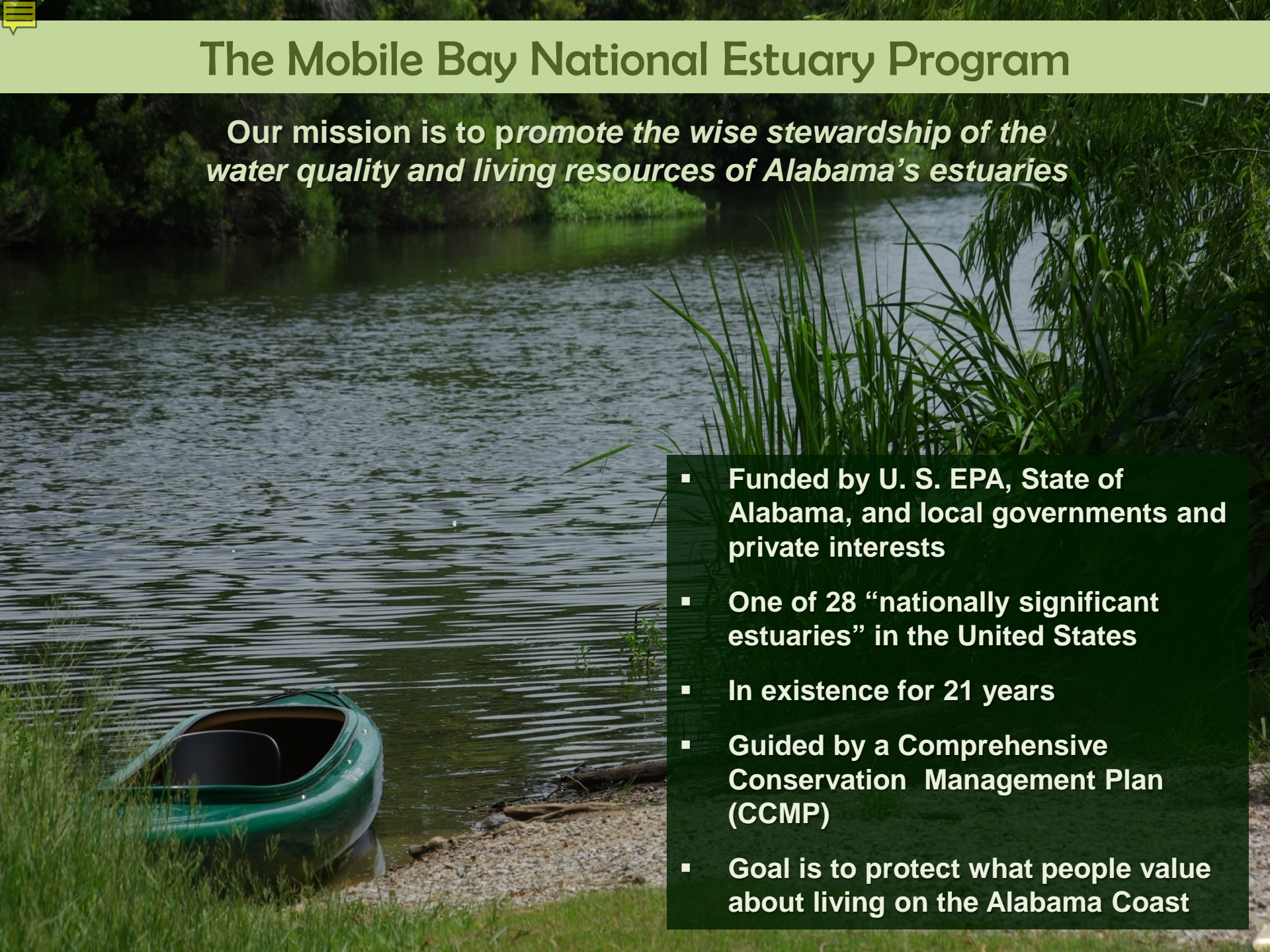






# The Mobile Bay National Estuary Program

*Our mission is to promote the wise stewardship of the water quality and living resources of Alabama's estuaries*

- 
- **Funded by U. S. EPA, State of Alabama, and local governments and private interests**
  - **One of 28 “nationally significant estuaries” in the United States**
  - **In existence for 21 years**
  - **Guided by a Comprehensive Conservation Management Plan (CCMP)**
  - **Goal is to protect what people value about living on the Alabama Coast**



# The Comprehensive Conservation and Management Plan

## Six Values

- Access
- Beaches/Shorelines
- Fish and Wildlife
- Heritage
- Resilience
- Water Quality

## Stressed Habitats

- Streams, Rivers, Riparian Buffers
- Freshwater wetlands
- Intertidal marshes and flats

## Strategic Approach

### *Measuring Status and Trends*

- Baseline and System Monitoring

### *Ecosystem Restoration*

- Watershed Planning
- Community and Environmental Restoration Projects

### *Building Capacity*

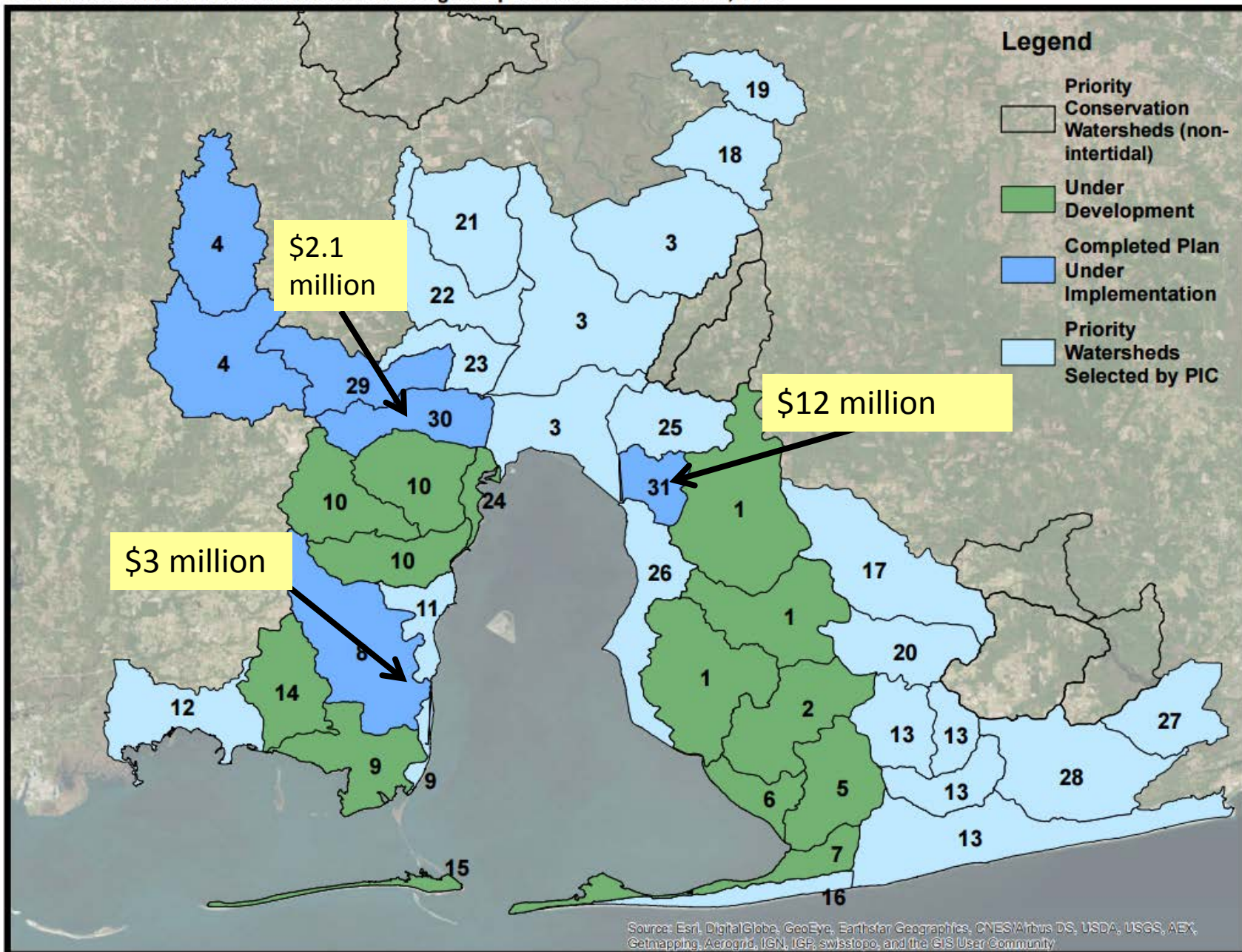
- Improve State and local governance
- Improve Environmental Management/Tools

### *Promoting Stewardship*

- Citizen Awareness and Involvement



# Coastal Alabama Intertidal Watershed Planning & Implementation as of June 1, 2016





# Goals of the watershed planning process...



- **Improve water quality** to support healthy populations of fish and shellfish
- **Improve habitats** necessary to support healthy populations of fish and shellfish
- **Protect continued customary uses of biological resources** to preserve culture, heritage and traditional ecological knowledge of the watershed
- **Improve watershed resiliency** to sea level rise and changing climate impacts
- **Expand opportunities for community access** to the open spaces and waters of the watershed

The background of the slide is a photograph of water with ripples. A vertical reflection of a tree trunk is visible on the right side of the image.

## Key Elements of Planning Process

- **Build Partnerships**, including identification of key stakeholders and solicitation of community input and concerns
- **Characterize the Watershed**, including creation of a natural and cultural resource inventory, identification of causes and sources of impairments, identification of data gaps and estimation of pollutant loads
- **Set Goals and Identify Solutions** including determination of pollutant reduction loads needed and management measures to achieve goals
- **Design and Implement Program**

## Goals

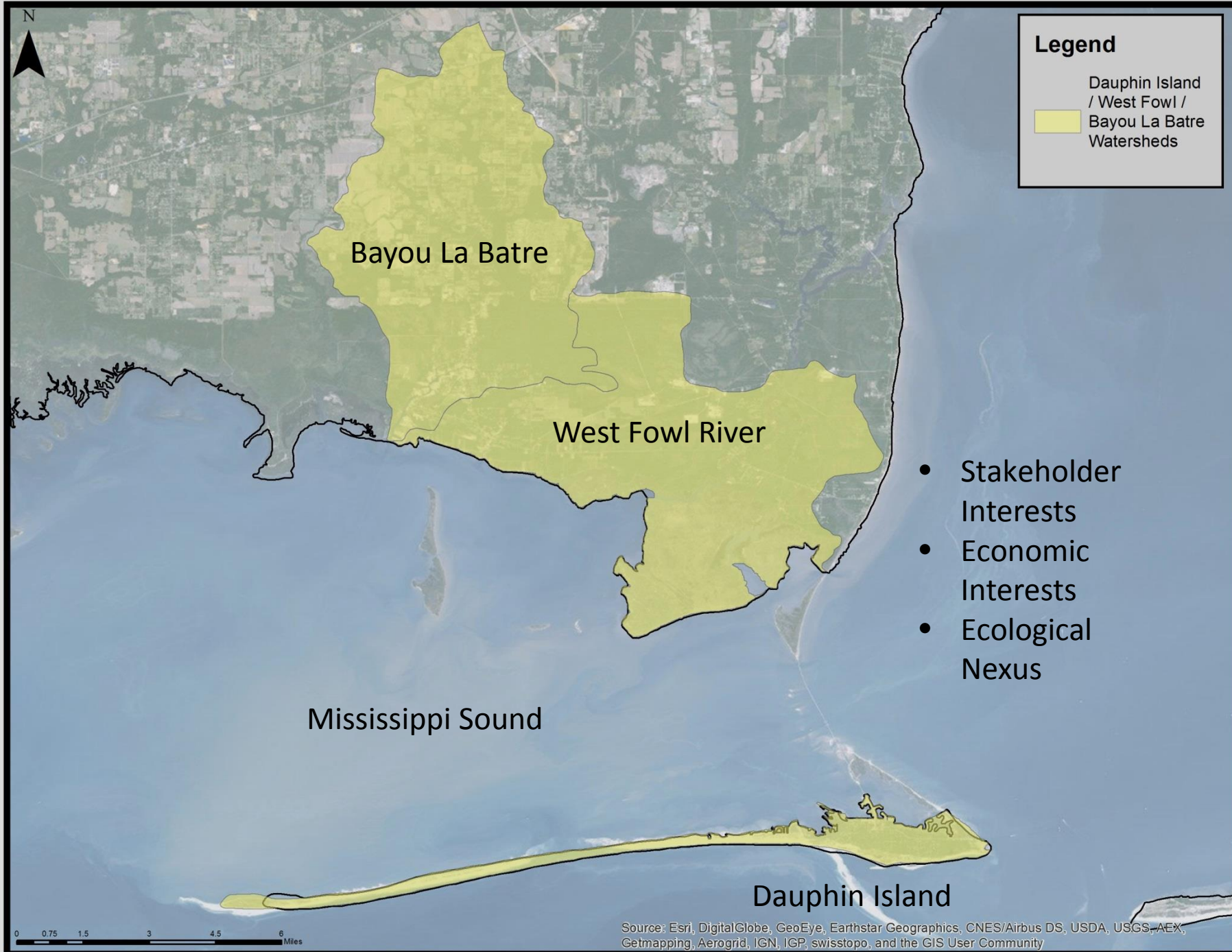
- Restore freshwater wetlands, streams and rivers, and intertidal marshes and flats, and
- Establish /institutionalize collaborative watershed management practices for each HUC 12 watershed



# Bayou La Batre Planning

- Scope has been expanded to include **West Fowl River & Dauphin Island**
- Major issues identified in the Bayou include **healthy fishery, resilience , access**
- Initial management measures
  - Safe Harbor locations
  - SSOs/Stormwater infrastructure
  - Bacteria & litter mitigation
  - Recreational access trail







## Bayou La Batre Planning integrated with West Fowl River and Dauphin Island= Mississippi Sound Complex

Contractor: Dewberry Engineers, Inc.

Mr. Chris Warn, Project Manager

Dr. Mike Magnoli, Project Team Engagement Specialist

Estimated Completion- May, 2017

Over the next several months:

- Meeting with Stakeholder groups
- Establish a Watershed Plan Steering Committee
- Mississippi Sound Public Meeting (January 2017)
- Written and online surveys
- US Army Corps and USGS scientific data for Barrier Island Study incorporated into plan
- Develop Management Measures, regulatory framework, financing opportunities, citizen involvement opportunities for implementation

Questions?

Thank you.

