

WESTERN SHORE WATERSHED MANAGEMENT PLAN

Delchamps Bayou Community Meeting



GMC

WELCOME

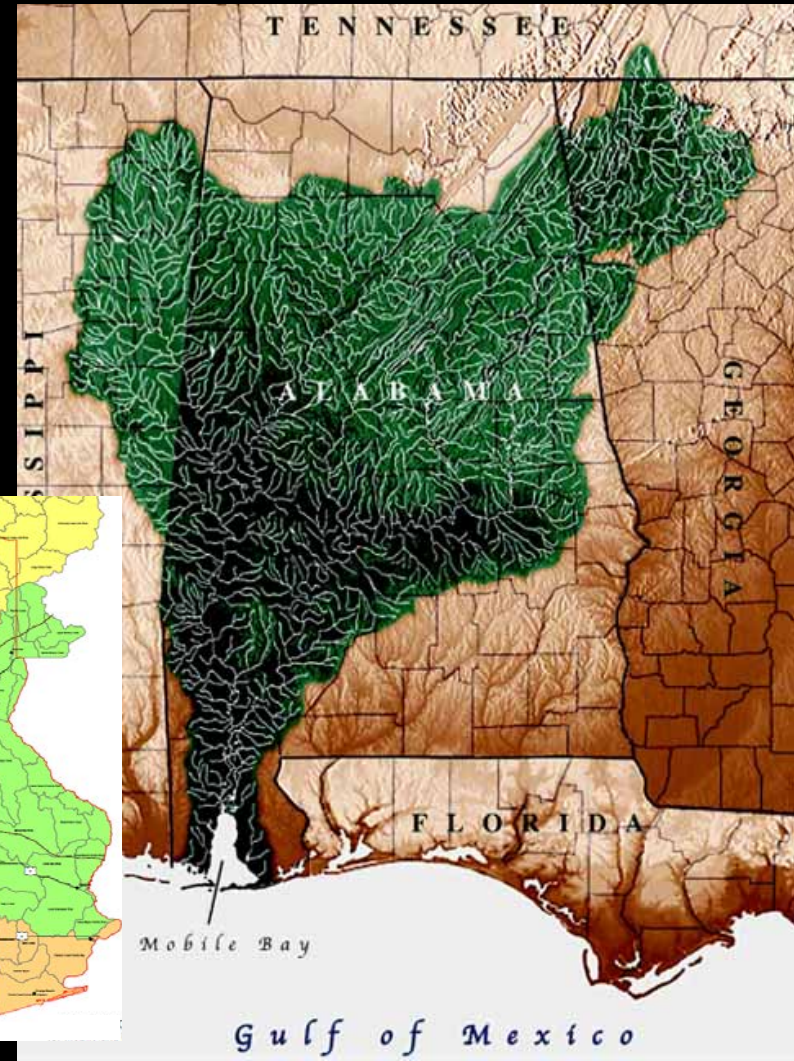
Mobile Bay National Estuary Program

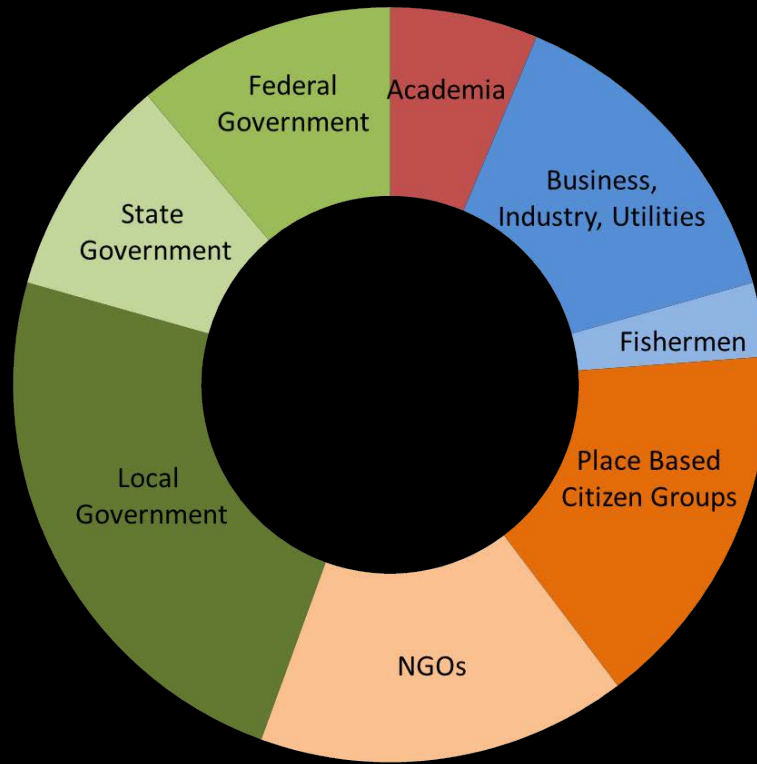


GMC

The Mobile Bay National Estuary Program

- » Established in 1995
- » Funded by US EPA, State of Alabama, Local Counties and Municipalities
- » Formed a multi-sector “conference” of leaders
- » Create/implement a Comprehensive Conservation and Management Plan





- » Champion protection and restoration efforts through cultivation of partnerships
- » Lead watershed protection by coordinating collective actions to measurably improve water quality, habitat management and living resource management
- » Establish a community of committed environmental stewards

The Connection

**What people value
most about living in
coastal Alabama...**



Access to Water and Open
Spaces



Coastlines (Beaches and Other
Shorelines)



Fish



Heritage and Culture



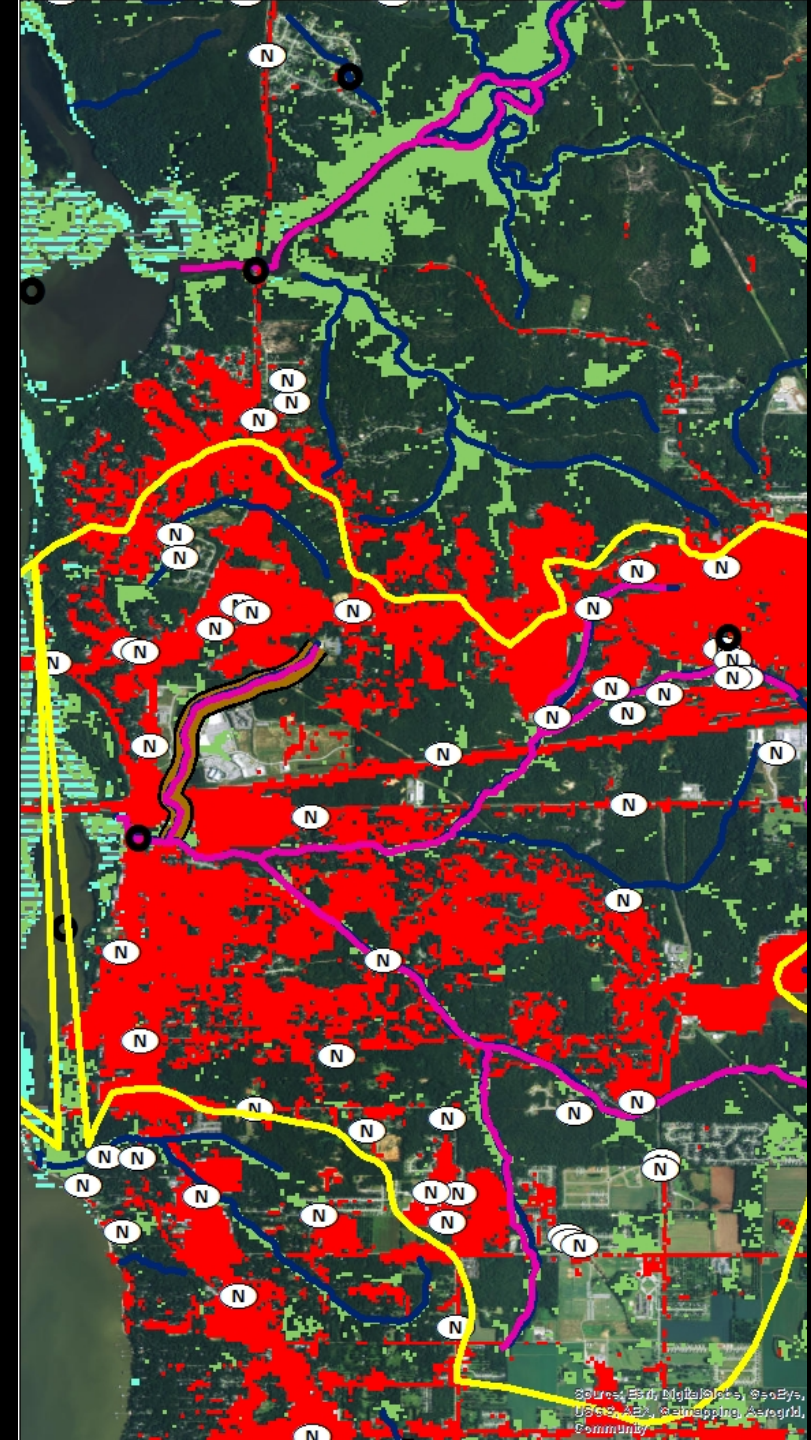
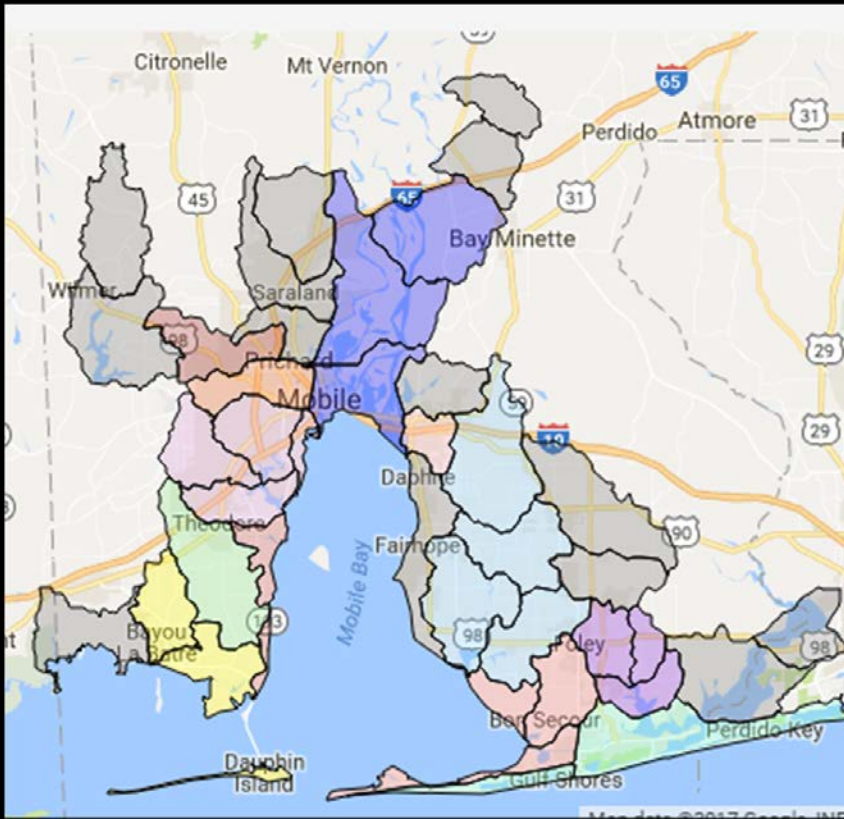
Environmental Health and
Resilience



Water Quality

The Methodology

A watershed
approach



How Watersheds Work



What is a Watershed Management Plan?

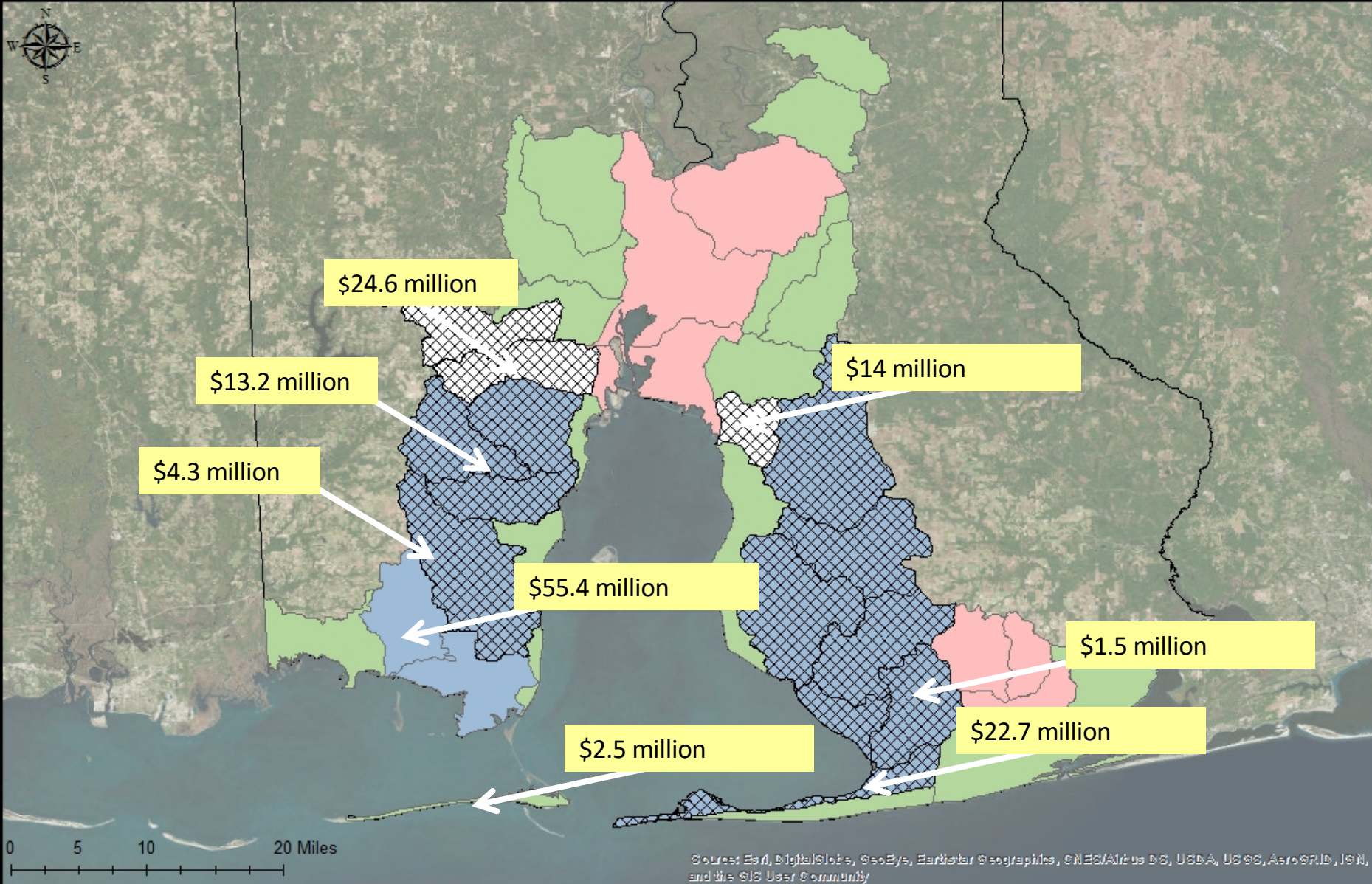
- » Stakeholders (people who care or are impacted)
- » Identify opportunities, concerns, and solutions
- » Make a timeline to implement the plan
- » Identify funding and technical assistance needed
- » Suggest monitoring strategies to evaluate success
- » Education and outreach



Goals of the watershed planning

- » Improve water quality
- » Improve habitats
- » Protect continued customary uses of biological resources
- » Improve watershed and community resilience
- » Expand opportunities for community access





- NFWF Funded
- Federal Restore Funded
- NFWF & Federal Store Funded
- Completed Watershed Plans

Mobile Bay National Estuary Program
 118 N. Royal St., Suite 601
 Mobile, AL 36602
 251/431-6409
www.MobileBayNEP.com

as of: 12/7/2017



Who are we?



GMC



WATERSHED MANAGEMENT
PLAN STEERING COMMITTEE

Purpose

Create a shared understanding about the condition of the Western Shore watersheds and share ideas about what will make it better than it is today.



Project Area

- » Garrow's Bend
 - » 4,239 Acres
 - » 8.2 Miles Shoreline
- » Deer River
 - » 9,487 Acres
 - » 9 Miles Shoreline
- » Delchamps Bayou
 - » 2,807 Acres
 - » 7.8 Miles Shoreline
- » **Total Acres: 16,533 acres**
- » **Total Shoreline: 25 miles**



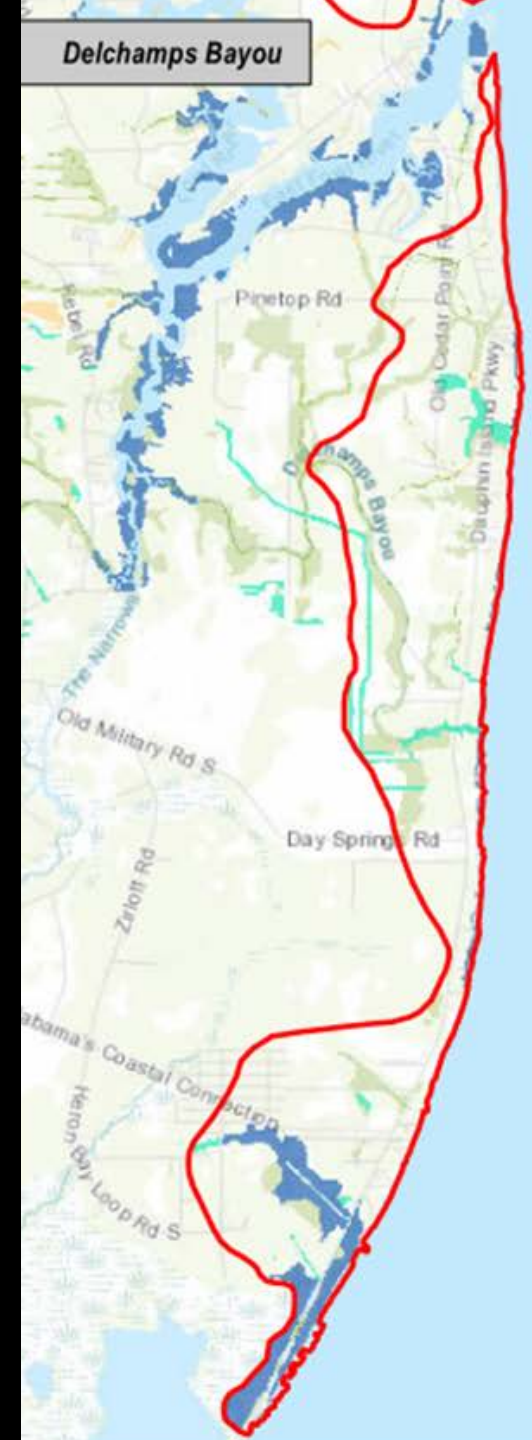
Project Area

- » Delchamps Bayou Watershed is very sparsely developed with rural character and waterfront residential development.
- » 30% of the Watershed is developed with commercial, industrial, and residential uses.
- » 50% of Delchamps Bayou is undeveloped.



Project Area

- » Major transportation routes: Dauphin Island Parkway and AL- 188
- » 25% of Delchamps Bayou is wetlands.
- » 10 miles of streams and waterways.



Community Comments

- » Garrow's Bend – January 23, 2020
- » A total of thirty-six (36) participants signed in at the meeting.
- » Topics we heard about:
 - » Erosion / Coastal Erosion
 - » Flooding
 - » Habitat
 - » Water Quality / Pollution
 - » Public Access
 - » Impacts of Sea Level Rise
 - » Lack of Public Education / Awareness
 - » Litter
 - » Preservation of Historic Sites



Breakout Table - #1

Access

How people connect to the water and open spaces:

- » Boat/kayak launches
- » Fishing piers
- » Bike/pedestrian trails
- » Parks/greenspaces

Where is the access to Mobile Bay and where do we need additional access?

Breakout Table - #2

Beaches and Shorelines

- » Protection
- » Economy
- » Beauty

Where is our shoreline vulnerable and where are we seeing issues related to erosion and sea level rise?

Breakout Table - #3

Fish and Wildlife

- » Protect biological resources
- » Improve habitats and abundance of wildlife
- » Fish and wildlife have an impact on livelihoods (FISHING, OYSTERING)

Where do you want to see natural areas and habitat preserved?



Breakout Table - #4

Heritage and Culture

- » Promotes our area's historic identity and protecting this legacy for future generations

What does the Watershed mean to you? How are you and your family connected to the Western Shore?



Breakout Table - #5

Resilience

The ability of human and natural physical systems to “bounce back” from unforeseen events.

- » Hurricanes
- » Flooding
- » Oil Spills

How will you be impacted by Sea Level Rise or the next Hurricane?
What areas of the watershed already experience high tide flooding?

Breakout Table - #6

Water Quality

Effects water that is drinkable, fishable, swimmable.

- » Stormwater Run-off (sediment, nutrients)
- » Bacteria (SSO's, failing septic systems)
- » Litter

Where are there water quality issues in the watershed?



Breakout Table

SURVEY – Have you completed the online survey? If not, please stop by this station!

Western Shore Watershed Management Plan



The Mobile Bay
National Estuary Program

[Introduction](#)[Community Engagement](#)[Our Community](#)[Our Watershed](#)[Our Vulnerable Shoreline](#)[Plan to Protect our Watershed](#)[Links](#)

What word comes to mind when you think of your watershed?

If you work in the watershed, what type of work do you do?

☐ Fisheries

☐ Agriculture



**Please visit
the tables**

GMC

Community Meetings Timeline

» Thursday, January 23 | 5:30-7:00 pm

» Elk's Lodge, 2671 Dauphin Island Parkway

» Monday, February 3 | 5:30-7:00 pm

» Pelican Reef, 11799 Dauphin Island Pkwy

» Monday, February 10 | 5:30-7:00

» Hollinger's Island Baptist Church, 2450 Island Road

Plan Timeline



PROJECT TASKS	2019										2020									
	APR	MAY	JUNE	JULY	AUG	SEPT	OCT	NOV	DEC	JAN	FEB	MAR	APR	MAY	JUNE	JULY	AUG	SEPT	OCT	
Draft Work Plan																				
Public Outreach and Education																				
Watershed Characterization																				
Land Use and Land Cover																				
Watershed Conditions																				
Identification of Critical Areas and Issues																				
Watershed Goals and Objectives																				
Management Measures																				
Implementation Program																				
Funding Sources																				
Monitoring and Sampling																				
FINAL DRAFT																				





THANK YOU FOR COMING!

Please make sure you signed in, your contact information will help us keep you up-to-date on the project.



GMC