

APPENDIX C MOBILE-TENSAW HUC8 AND MOBILE BAY HUC8 MAP ATLAS

This Appendix contains full page maps for connectivity metrics and the Mobile Bay Connectivity Index at the HUC8 tier (i.e., for NHDPlus catchments in the Mobile Bay and Mobile-Tensaw HUC8s). The following guidelines were used for map development:

- Maps display rank-normalized metric and index scores. Note that scores were re-calculated for the HUC8 tier using data from just those catchments in the Mobile-Tensaw and Mobile Bay HUC8s. These maps are not “zoomed-in” versions of Basin tier connectivity maps shown in Appendix B but rather display different rank-normalized metric and index values;
- Maps were created using 10 equal-interval color classes. Because scores are rank-normalized, these classes generally correspond to deciles;
- To ease interpretation, maps display metrics in their original directionality (see Table 4) rather than directionally aligned scores used for index calculations. For example, areas labeled as having “high” travel time scores in Figure C-2 correspond to areas with a high travel times. The inverse of these scores (1-x) were used to calculate the Connectivity Index so that a high travel times contributed to a lower Connectivity Index score.

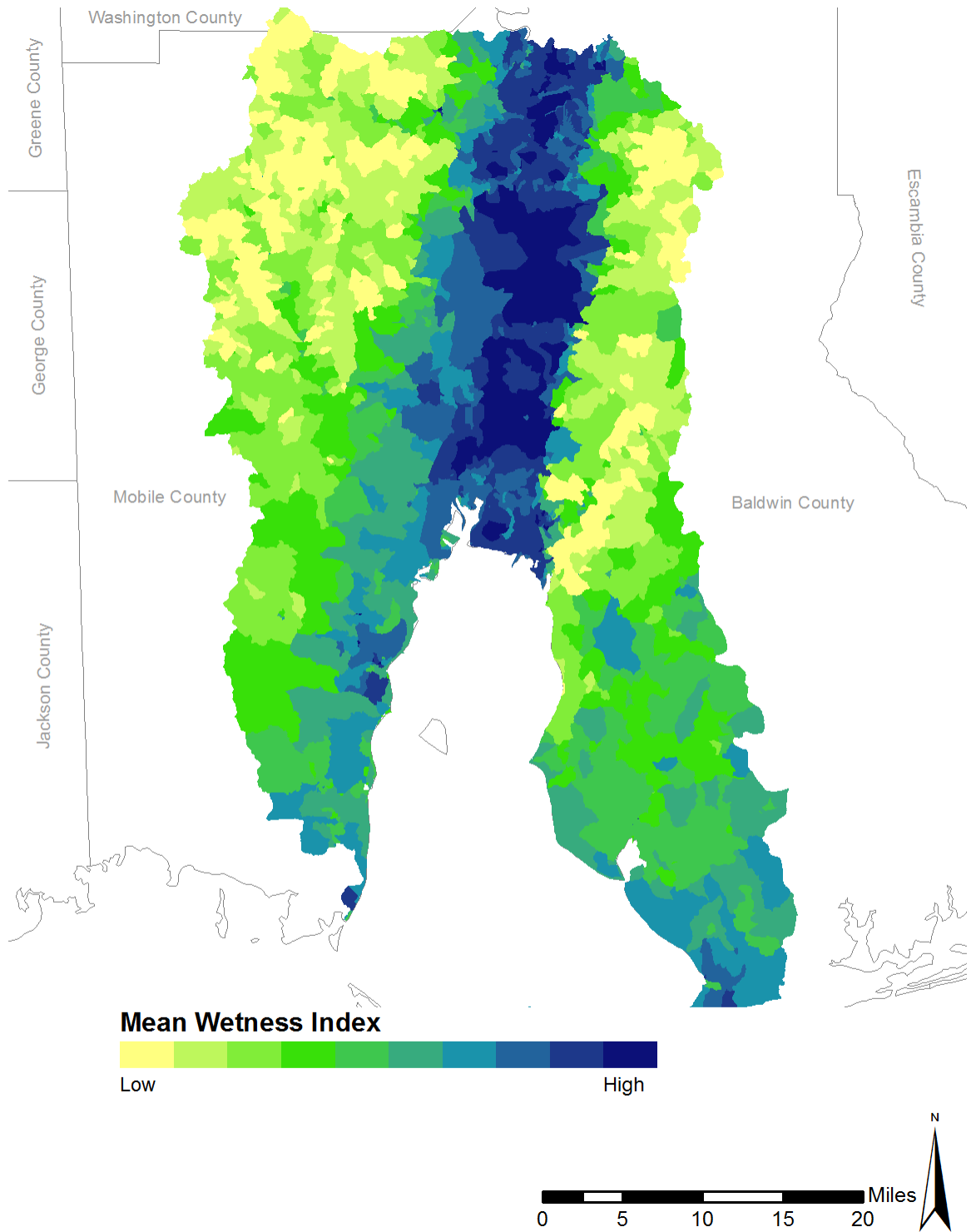


FIGURE C-1. MEAN WETNESS INDEX SCORES.

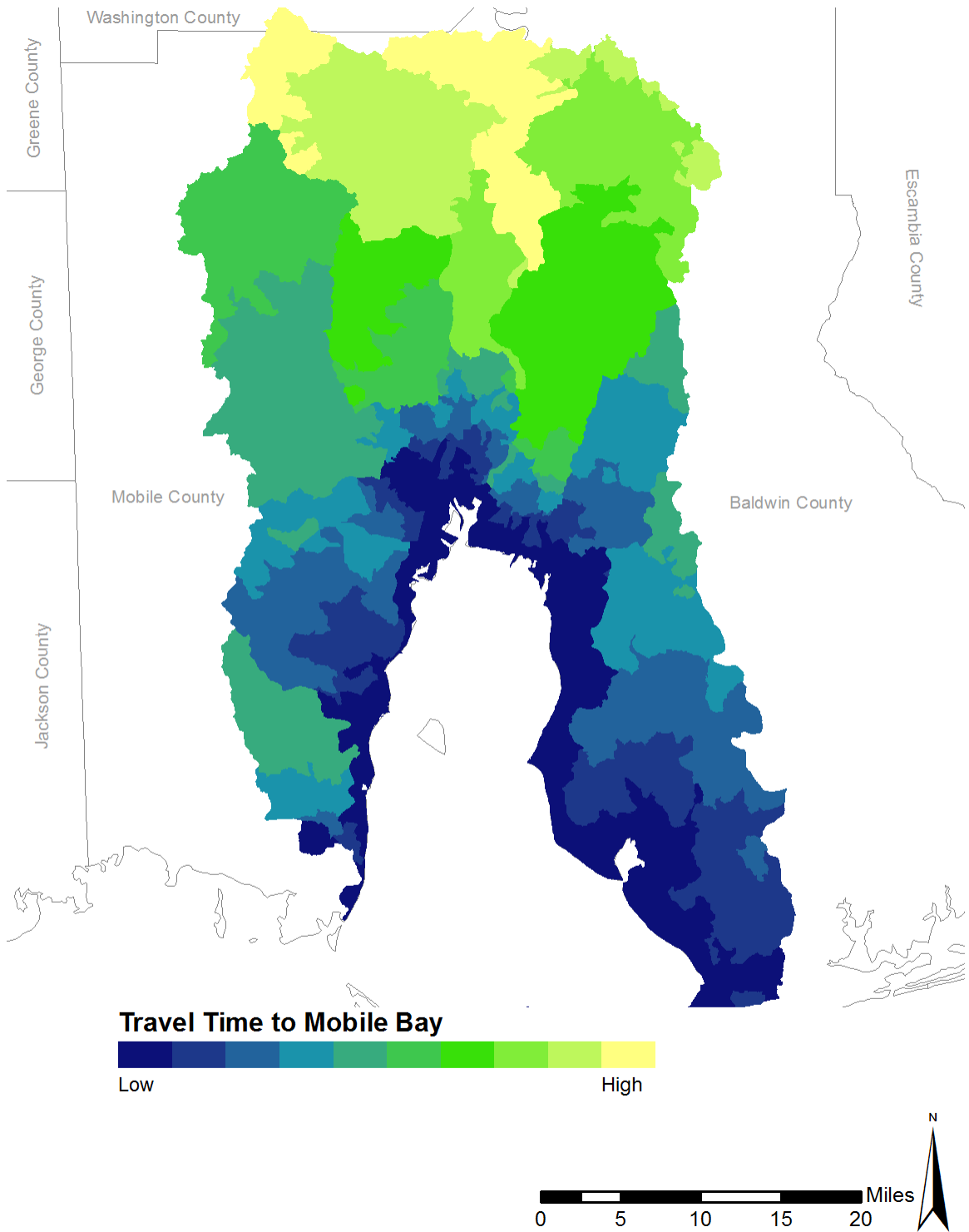


FIGURE C-2. MOBILE BAY TRAVEL TIME SCORES.

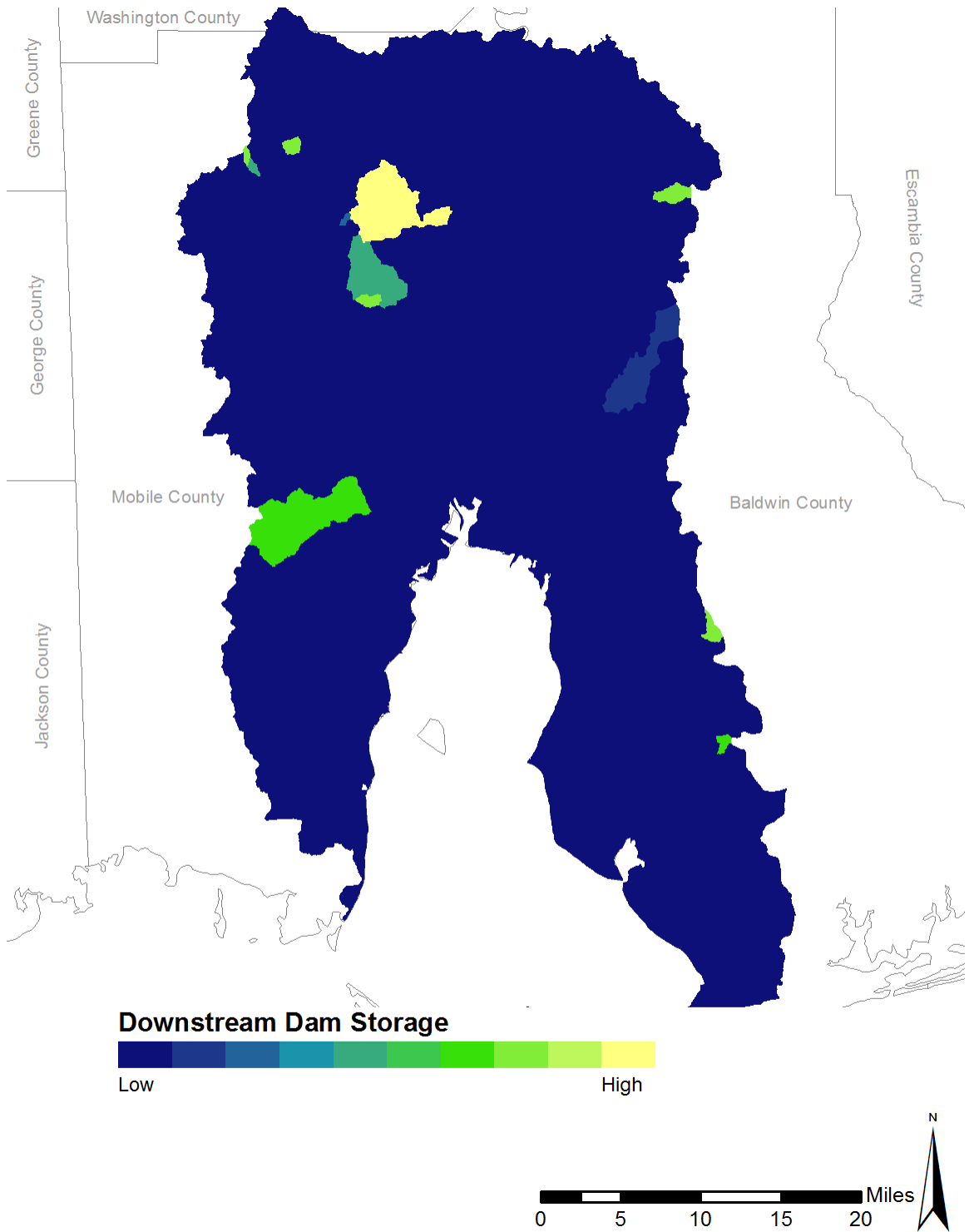


FIGURE C-3. DOWNSTREAM DAM STORAGE SCORES.

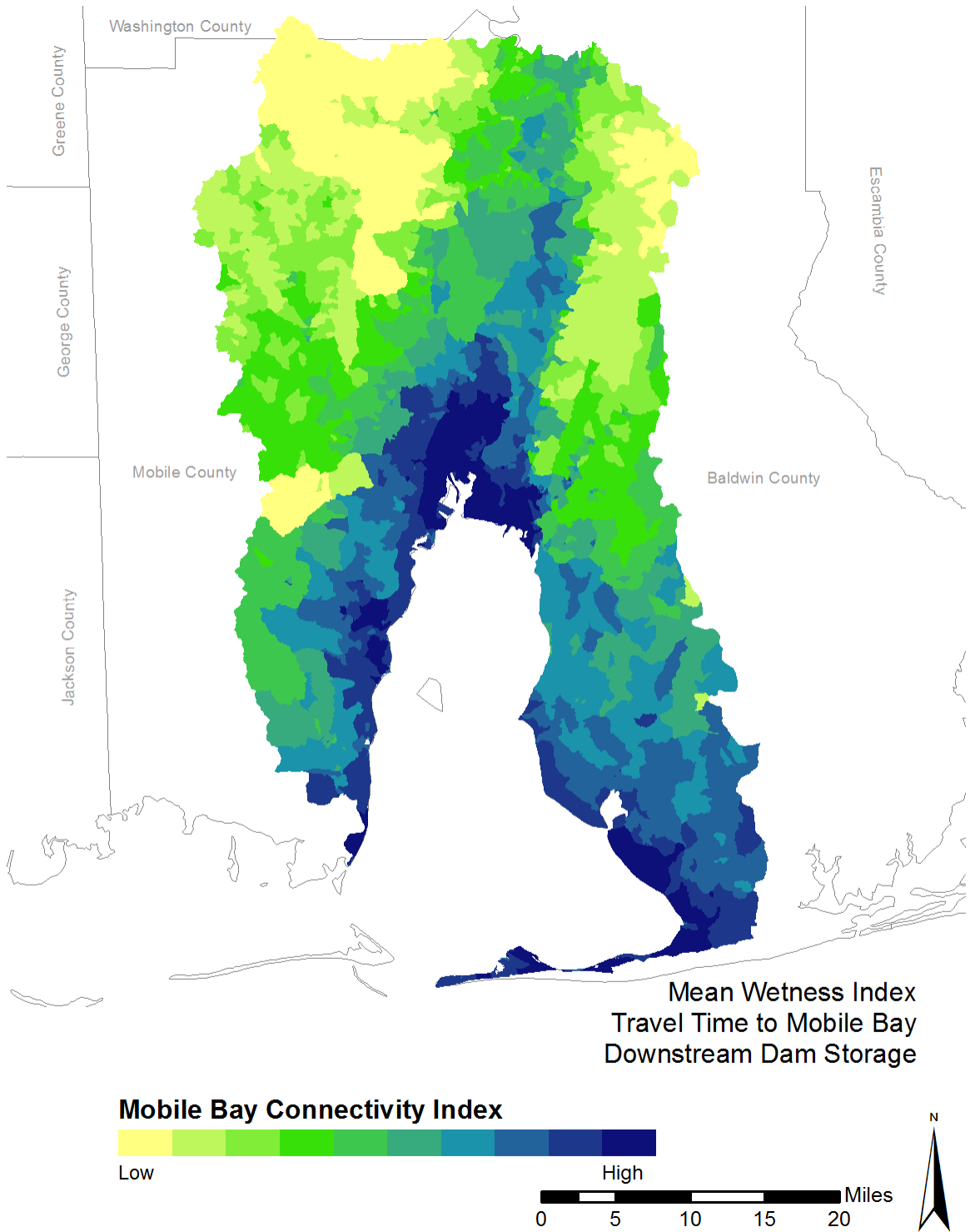


FIGURE C-4. MOBILE BAY CONNECTIVITY INDEX SCORES.